



School Enrolment and Capacity: History, Projections, and Issues

*Confidential version
Updated with 2011/12 enrolment
Feb 22/12 – added Appendix E with 2012 school district
projections*

**Prince George District Parent Advisory Council
February 22, 2012**

Table of Contents

Why this Report?	3
Why are Enrolment Projections Important?.....	4
What is Capacity?.....	5
Notes on Data	6
Historical Enrolment	7
What has happened to total student numbers?.....	7
What has the enrolment change been for elementary schools in each Family Group?	8
What has the enrolment change been for secondary schools in each Family Group?	9
How has the enrolment changed, as compared to the capacity of the elementary schools in each Family Group?	10
How has the enrolment changed, as compared to the capacity of the secondary schools in each Family Group?	11
Projected Enrolments – Ministry of Education.....	12
Projected Enrolments – School District	14
What is the difference between the total projections for the Ministry of Education and the School District?	14
What are the school district enrolment projections for school family groups, as compared to capacity?	16
Are there differences in the projections shown in the District Sustainability report and the current district projections?	18
Individual School and Capacity Issues.....	21
Recommendations	28
Appendix A: Historic Enrolments	29
Appendix B: List of Closed Schools and Nominal Capacity	32
Appendix C: List of Schools, Closure Status, and Capacity.....	33
Maps	35
Appendix E: Updated Projected Enrolments 2012 – School District	40
What is the difference between projections for the School District between 2011 and 2012?	40
What is the difference between the total projections for the Ministry of Education and the School District?	42
What are the school district enrolment projections for school family groups, as compared to capacity?	44
Are there differences in the projections shown in the District Sustainability report and the current district projections?	46
Individual School and Capacity Issues.....	48

Why this Report?

The purpose of this report is not to change history, or debate historical decisions, but rather to learn from the past as we look to the future.

As a parent organization, we see future capacity issues with schools in our district, and have shown these issues in this report. There is already not enough capacity in certain elementary schools to accommodate all students who wish to attend those schools, and we see this problem becoming more common in the future in certain areas of the district.

As an example, at the start of the 2011/12 school year, one class in Prince George spent the first months of the school year meeting in a school library as there is no room for them in the school. A number of elementary schools have had their registration capped, and students have been turned away from their neighbourhood schools.

The District Parent Advisory Council would like to see an annual report on the condition of our district's student enrolment and capacity. This report would be delivered to the school board at a public board meeting, prior to kindergarten registration and the start of the district transfer process, and also be in time to provide assistance to the budget committee when preparing the following year's budget. The report would provide information on any caps on registration or transfers, and would also provide the board and the public with information on any problem areas.

There should be time built in for dialogue, discussion, collaboration, and consensus building to take place about options for dealing with capacity issues, and this discussion should not take place in the eleventh hour.

In this report, we have looked at the historic enrolment numbers and projected enrolment numbers, and compared them to the capacity of our schools. This is the type of visual information that can be generated and provided to Board members and the public to ensure that people understand the historical impact of declining enrolment, increases in enrolment, and school closures. This type of information could easily be included in an annual report so that trends can be clearly visualized.

Why are Enrolment Projections Important?

Projections matter.

Projections matter because enrolment projections are a factor in whether individual schools are closed or opened. They matter because they can indicate whether or not more space is needed in a particular community. They matter because they affect the attention that is paid to a particular school – if a school is projected with declining enrolment, it may get fewer upgrades than a school with rising enrolment.

Projections should be public.

Projections out to 2014 were publically given in the district closure report. The handouts given at each closure meeting had the projections for the affected schools at the top of the page. The chair of the school board has given interviews to the newspaper stating: ““Our projections are status quo, we’re not seeing increases. We’re going to lose a tremendous amount of kids out of Heather Park, we’re not seeing huge issues as far as enrollment increases at Glenview and then if we move to the western part of the city and up to the College Heights area, it’s kind of the same situation.” Given that the projections are being used for planning purposes and to answer questions from parents, and also given that this is a public school district, numbers and assumptions used towards the planning should be made public.

Projections depend on assumptions.

As the projections are critical to the future of schools, so are the assumptions critical to the projections. Any projection that does not have explainable assumptions is fatally flawed. Without an outline of the assumptions behind the projection, it is unknown as to whether or not the projection depends on out-dated data, inaccurate assumptions, or assumptions made to influence a particular course of action.

Projections should be viewed cautiously.

As with any projection of the future, it is difficult to be 100% accurate except by accident. Along with this is a requirement to be cautious about which projection is considered. For example, if the question at hand is how many elementary schools should be in a particular area, looking at the trend for total student registration would be misleading.

Projections are pivotal for planning

It is essential to plan ahead for adequate accommodation of students, and to avoid unnecessary expenses.

What is Capacity?

The capacity of a school depends on the grade of the students enrolled in the school. An elementary school with 10 classrooms, for example, would be able to hold 220 kindergarten students, or 240 grade 1 to 3 students, or 300 grade 4 to 7 students, based on current class size maximums.

The capacity numbers shown in this report have been taken from the district closure report (and previous closure reports). When showing capacity, two lines are shown – nominal capacity and working capacity. According to the district closure report:

“When considering the number of student spaces in a school building, the ministry has... standards of measurement that it uses in considering the replacement or renovation of a building through the ministry capital plan.

The principal standard is nominal capacity. Nominal capacity forms the base line and remains fixed. It is based upon 20 kindergarten students per classroom and 25 students per class, Grades 1 through 12.

For the purposes of this [District Sustainability Committee] report, we have introduced the concept of “working capacity.” Working capacity acknowledges that an intermediate or secondary classroom can accommodate up to 30 students. Kindergarten and primary classroom occupancy maximums range from 22 to 24 students per classroom.”

Nominal and working capacities have not been modified for Lac des Bois or Heather Park Elementary schools. While they were formerly a junior secondary and a middle school, they are now both elementary schools. The real capacity numbers would have decreased.

Working capacity is also affected by portables. Current portable space has been shown, but the history of the portables is not known. It is assumed that each portable adds 30 spaces to a school. Portables do not add to the nominal capacity of a school.

It is important to note that there are district average class size limitations, in addition to individual class size limitations. For example, an individual kindergarten class cannot exceed 22 students, but on average, the district average size for kindergarten classes must not exceed 19 students. For grades 1 to 3 the maximum class size is 24 students, but cannot exceed 21 students on average across the district, and for grades 4 to 7 the maximum class size is 30 students, but cannot exceed 28 students on average across the district. In other words, a district cannot run all its schools at full capacity and still be compliant with the School Act.

Note that a class may exceed 30 students for grades 4 and over if the superintendent, principal, and teacher agree that the organization of the class is appropriate for student learning. For grades 4 to 7, the teacher must consent; for grades 8 and over, the teacher must be consulted.

Other issues that will affect the real capacity of a school are Strong Start programs, other instructional use of classroom spaces (example: art room), or day care spaces. These are not examined in this report.

Notes on Data

A table of data is available in an Appendix to this report.

A “family of schools” as defined by each high school and the respective “feeder” elementary schools. Closed schools have been categorized with their most logical “family”.

Actual enrolment data was supplied by the Ministry of Education. Some of that data can be accessed at <http://www.bced.gov.bc.ca/reporting/>

Enrolment data has been updated with 2011 numbers. The section in the report showing projections has not been updated – it shows historic numbers up to the 2010/11 school year, and then projections after that.

As the analysis has been based on elementary and secondary schools, Heather Park Middle school was divided up, with grades 6 and 7 shown as an elementary school, while grade 8 shows as a secondary school. Junior secondary schools were counted as secondary schools.

School district DSC projections are from the District Sustainability Committee report.

A recommended document would be the School District Facilities Plan for the Sunshine Coast school district, which looks at issues such as projected enrolments and facilities.

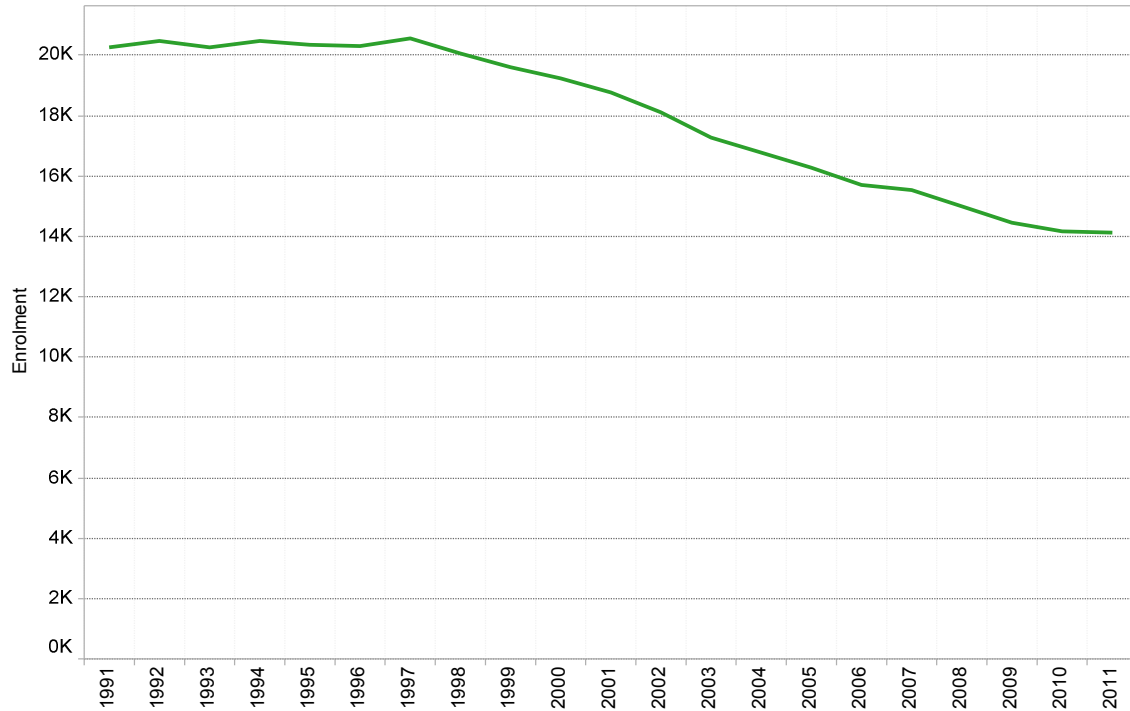
School district projections for individual schools are from a one page report titled “School Age Enrolment Forecast 2010-2016”, showing total projected population per school for various years. DPAC verbally asked for these projections to be made public at a public school board meeting and was denied. Given the situation, projections have been left in the version of the report provided to DPAC executive, the school board, and the school district. Pages 14 to 28 are removed from the version provided to other parties. It is unclear why this information cannot be made public.

Historical Enrolment

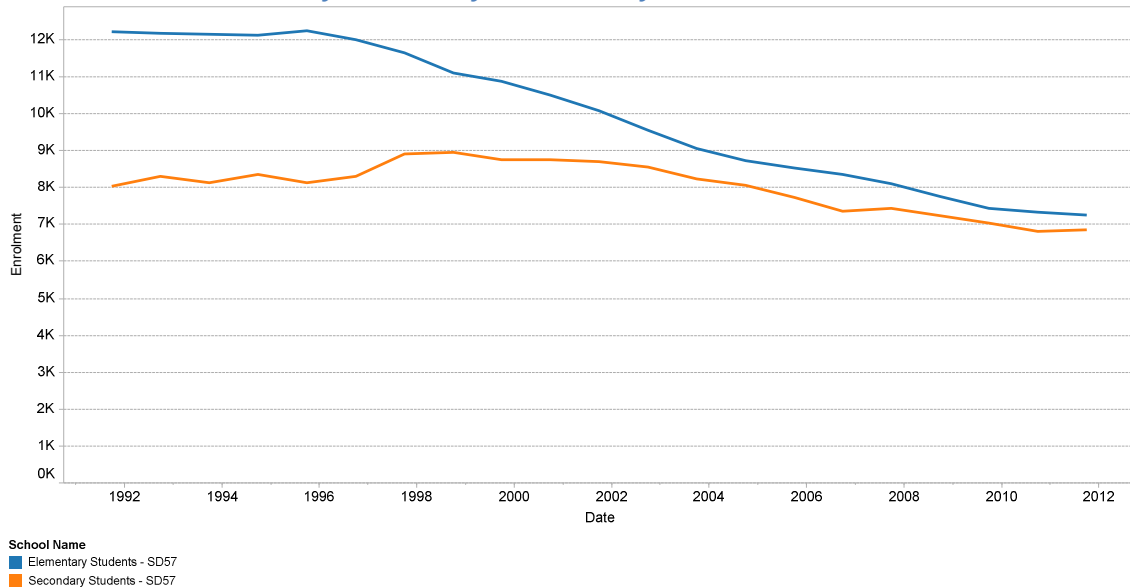
What has happened to total student numbers?

Since 1997, school district enrolment has decreased dramatically.

Total Enrolment



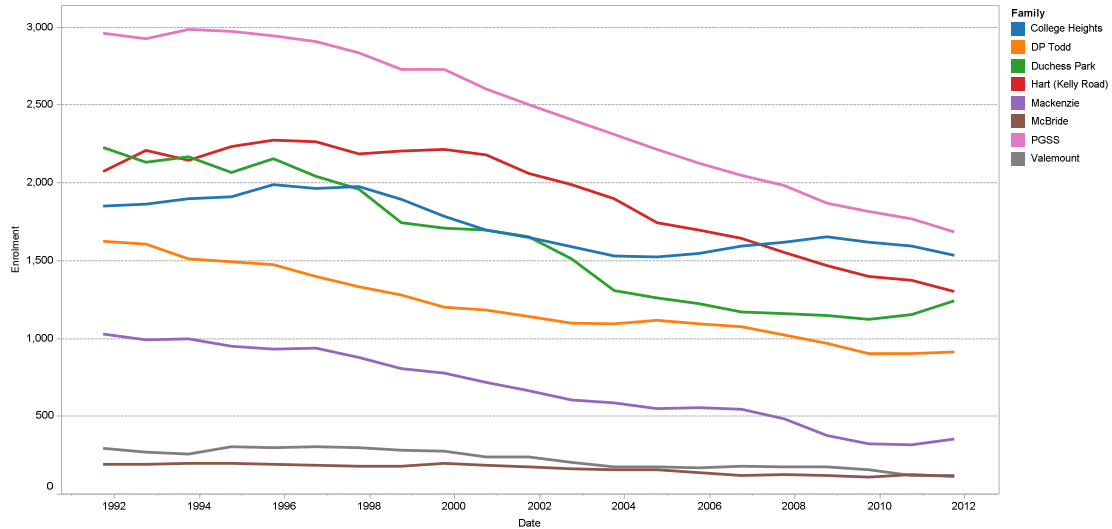
Enrolment Broken down by Elementary or Secondary



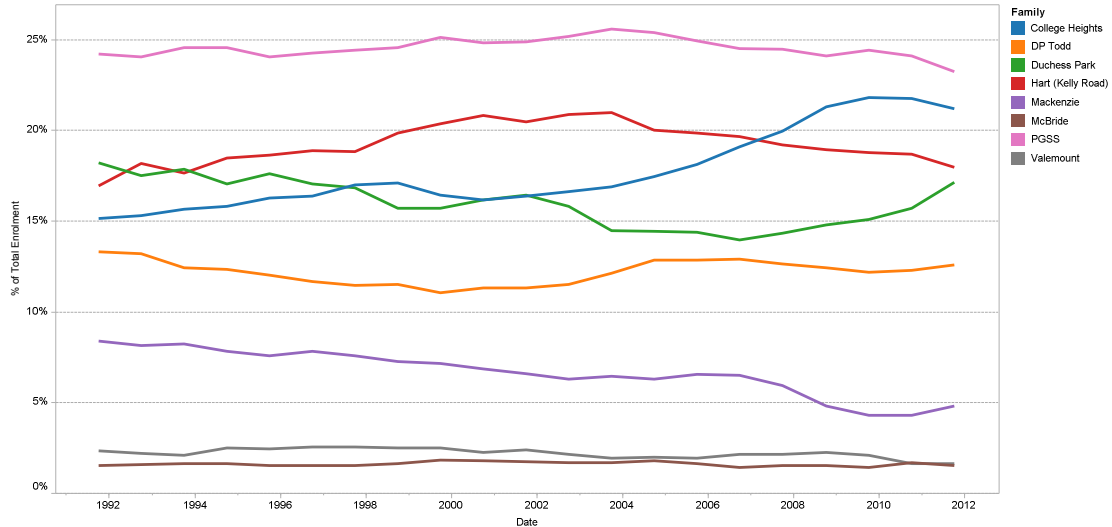
As can be seen, the elementary school enrolment has seen more of a decrease than the secondary school population.

What has the enrolment change been for elementary schools in each Family Group?

Elementary schools for each Family Group – Total Enrolment



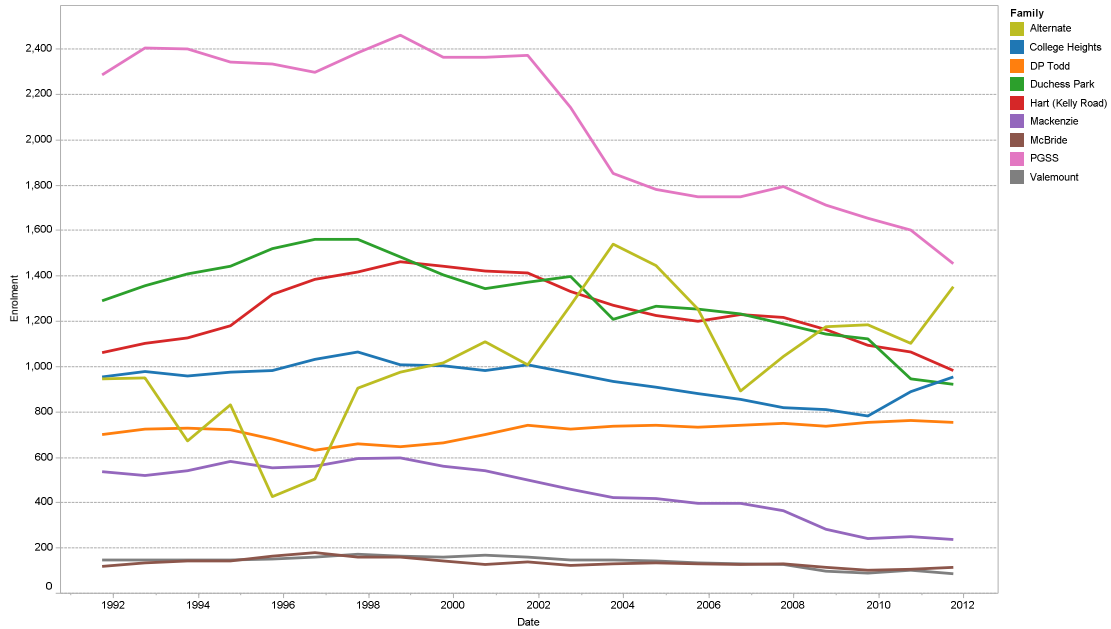
Elementary schools for each Family Group – by Percentage of Total Enrolment



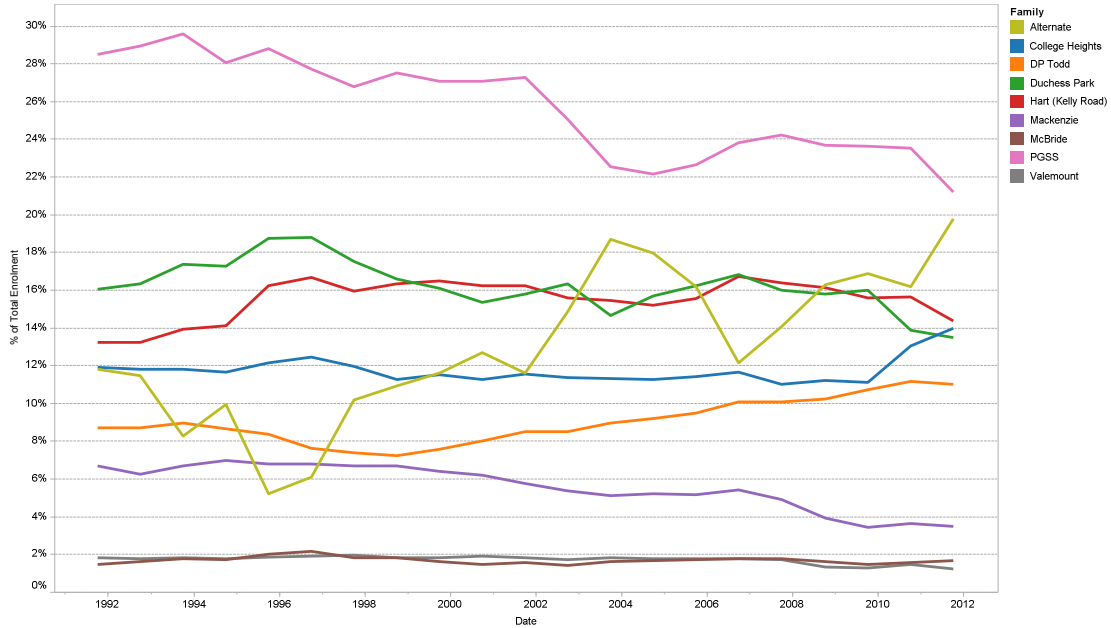
The biggest change in relative enrolment has come from the College Heights area elementary school growth, especially since 2003. Mackenzie has seen a decrease from making up 8% of the district's elementary school enrolment, to 4%. PGSS, DP Todd, and Kelly Road's family groupings have remained fairly level as compared to the entire district, while Duchess Park had decreased. The changes in registration due to the capping of registration in College Heights and the introduction of the single track French school in Duchess Park are starting to be seen. Valemount and McBride have remained fairly constant as a percentage of the entire district.

What has the enrolment change been for secondary schools in each Family Group?

Secondary schools for each Family Group – Total Enrolment



Secondary schools for each Family Group – by Percentage of Total



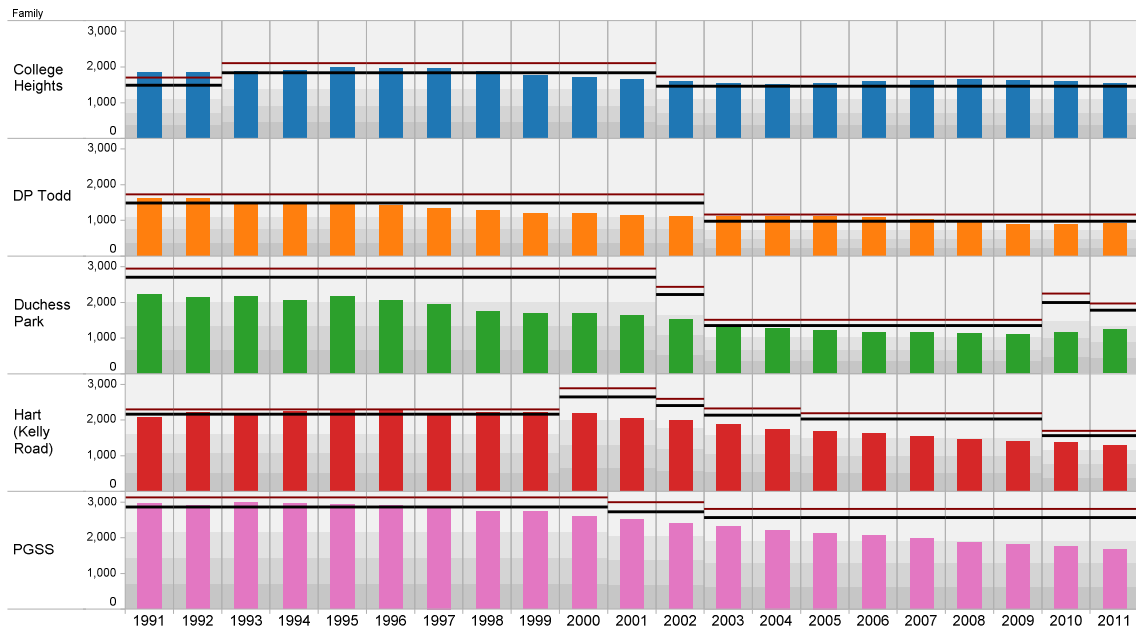
There appears to have been a change in how the enrolment in the alternate programs was reported starting in 2003, which seems to have affected the figures for PGSS.

How has the enrolment changed, as compared to the capacity of the elementary schools in each Family Group?

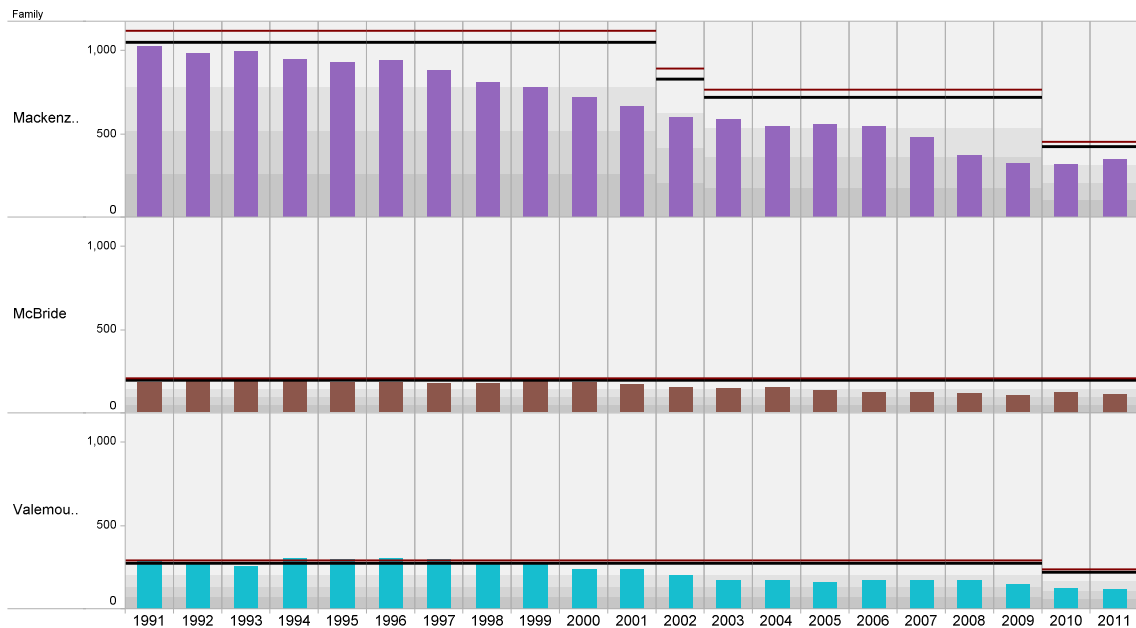
The black line represents nominal capacity, and the red line represents working capacity.

The capacity increases and decreases in various years as schools open or close (see appendix for list of schools). Historic data is not available for capacity changes caused by portables.

Prince George area – Elementary schools for each Family Group



Mackenzie, McBride, Valemount area – Elementary Schools for each Family Group

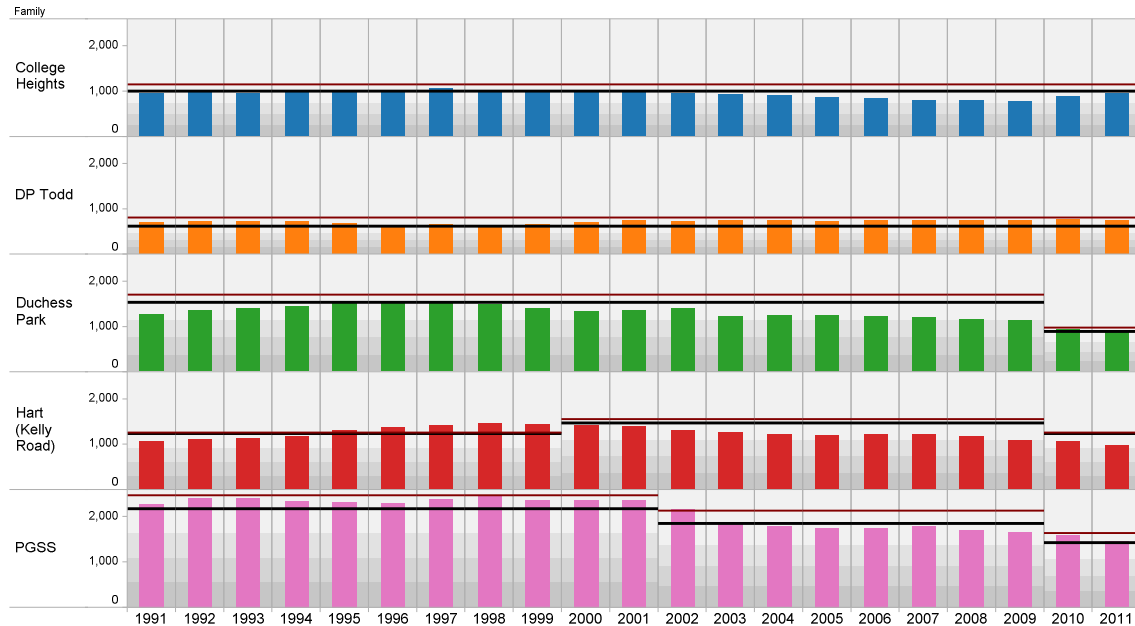


Prince George and Mackenzie, McBride, and Valemount are shown separately due to the difference in scale of the total student numbers.

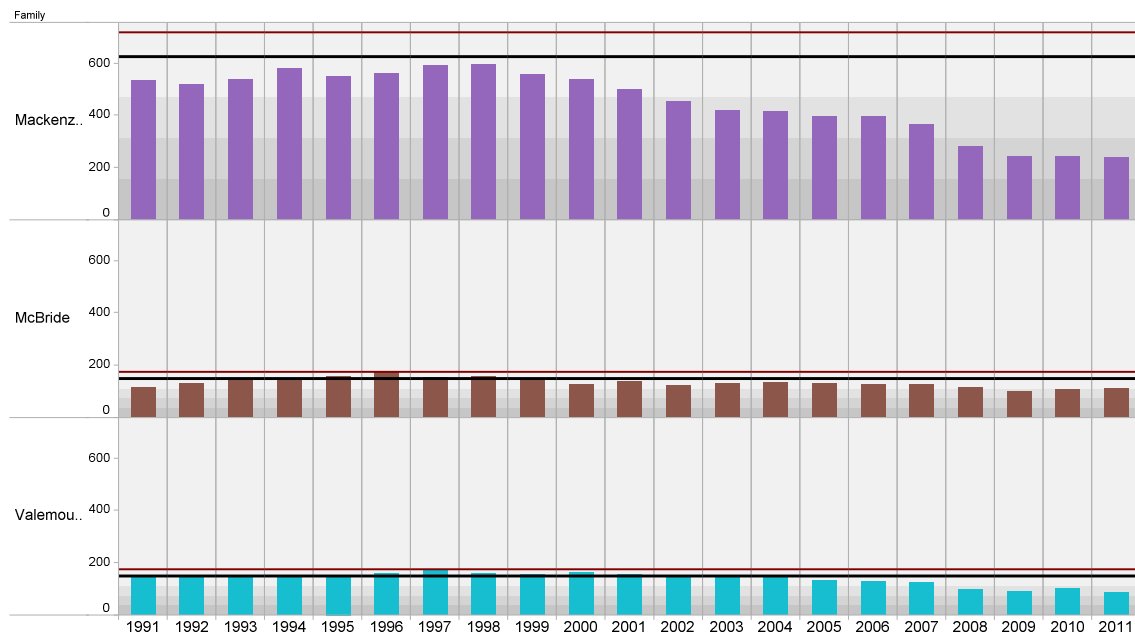
How has the enrolment changed, as compared to the capacity of the secondary schools in each Family Group?

Prince George area – Secondary schools for each Family Group

Note: this includes the junior secondary schools and a portion of the middle school, now closed, in each family group. For example, the secondary schools in the PGSS family have included Prince George Secondary, Blackburn Junior Secondary, and John McInnis Junior Secondary.



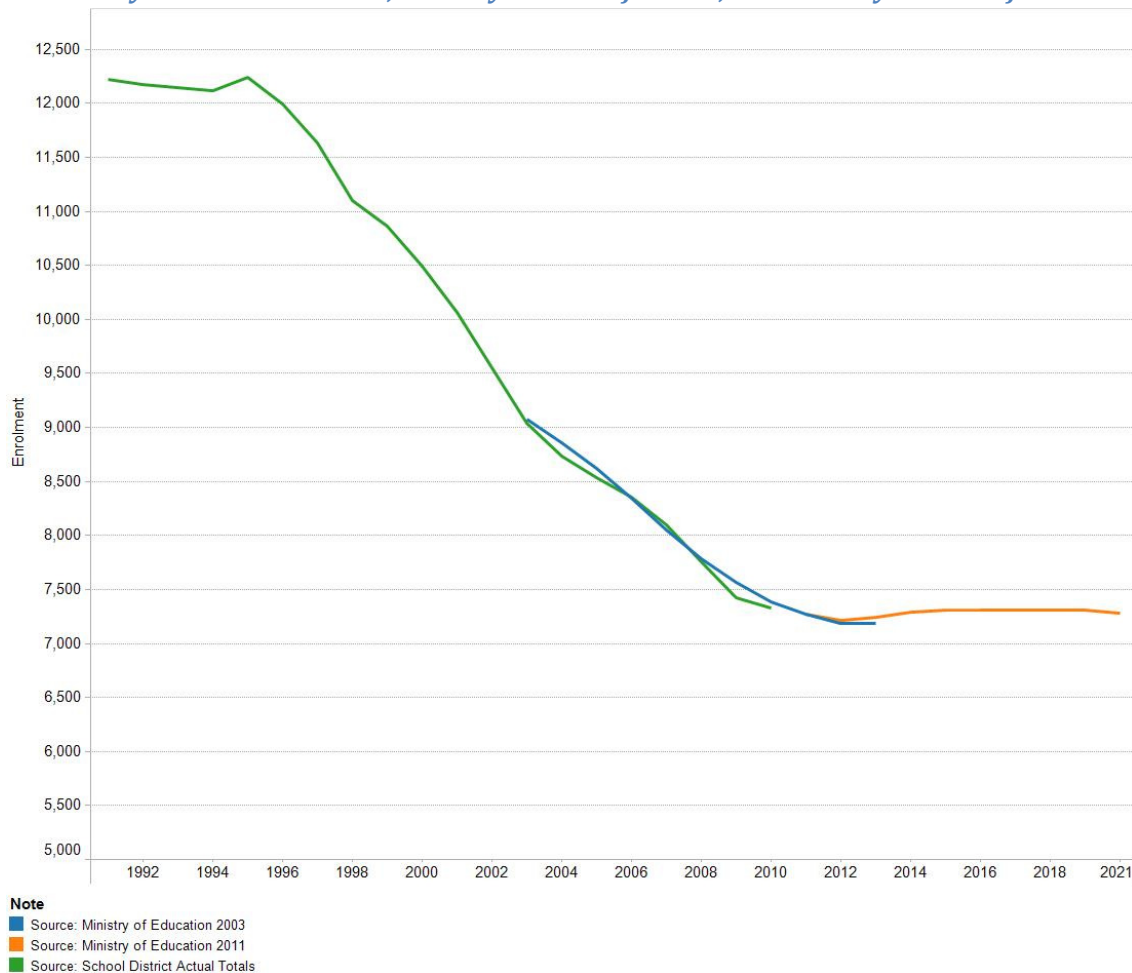
Mackenzie, McBride, Valemount area – Secondary Schools for each Family Group



Projected Enrolments – Ministry of Education

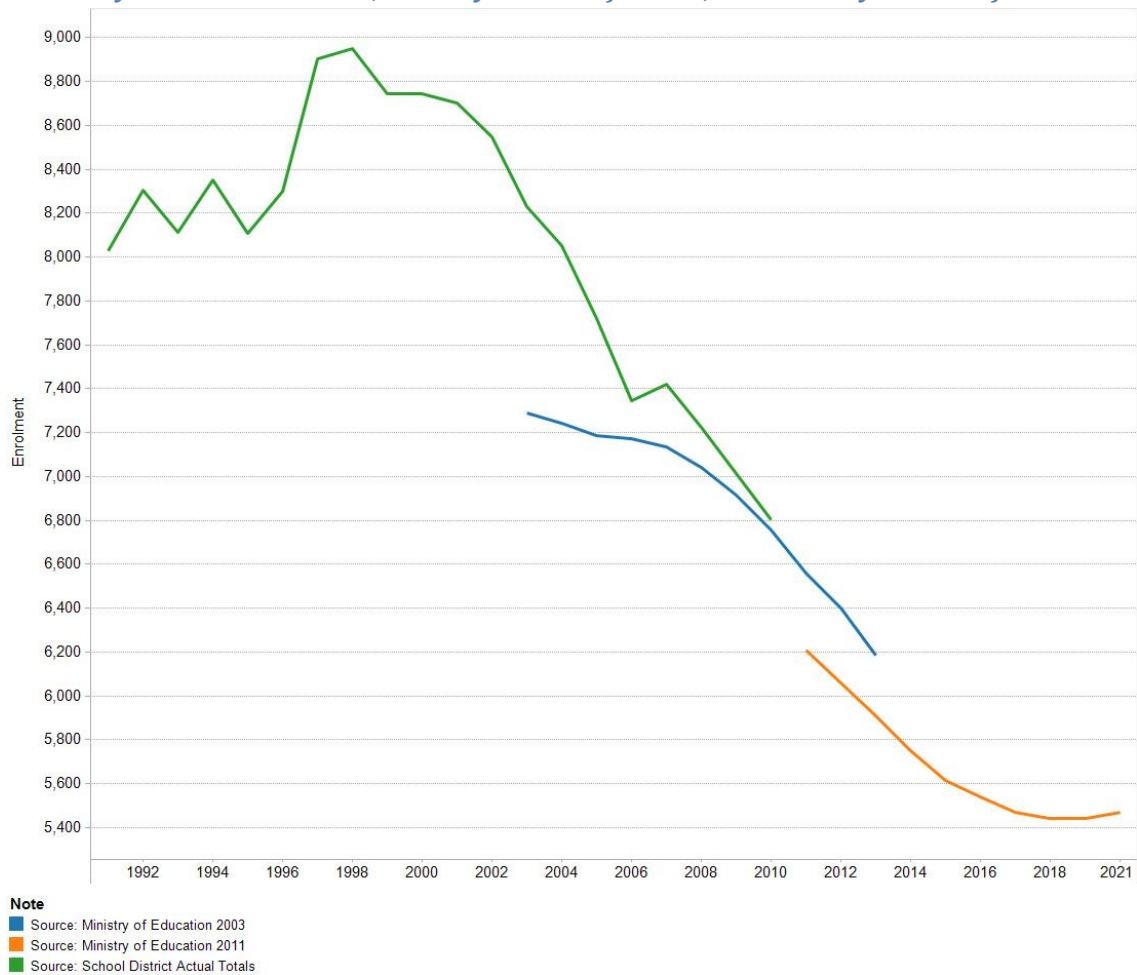
The Ministry of Education makes public projections for each school district per grade, as part of their Capital Planning Resources.

Elementary Enrolment – Actual, Ministry 2003 Projections, and Ministry 2011 Projections



The projections posted on the Ministry website that are labelled as being made in 2003 seem to be very accurate in projecting the elementary school population up to 2010. For 2011 and onwards, their projections are showing a slight increase in elementary school enrolment.

Secondary Enrolment – Actual, Ministry 2003 Projections, and Ministry 2011 Projections

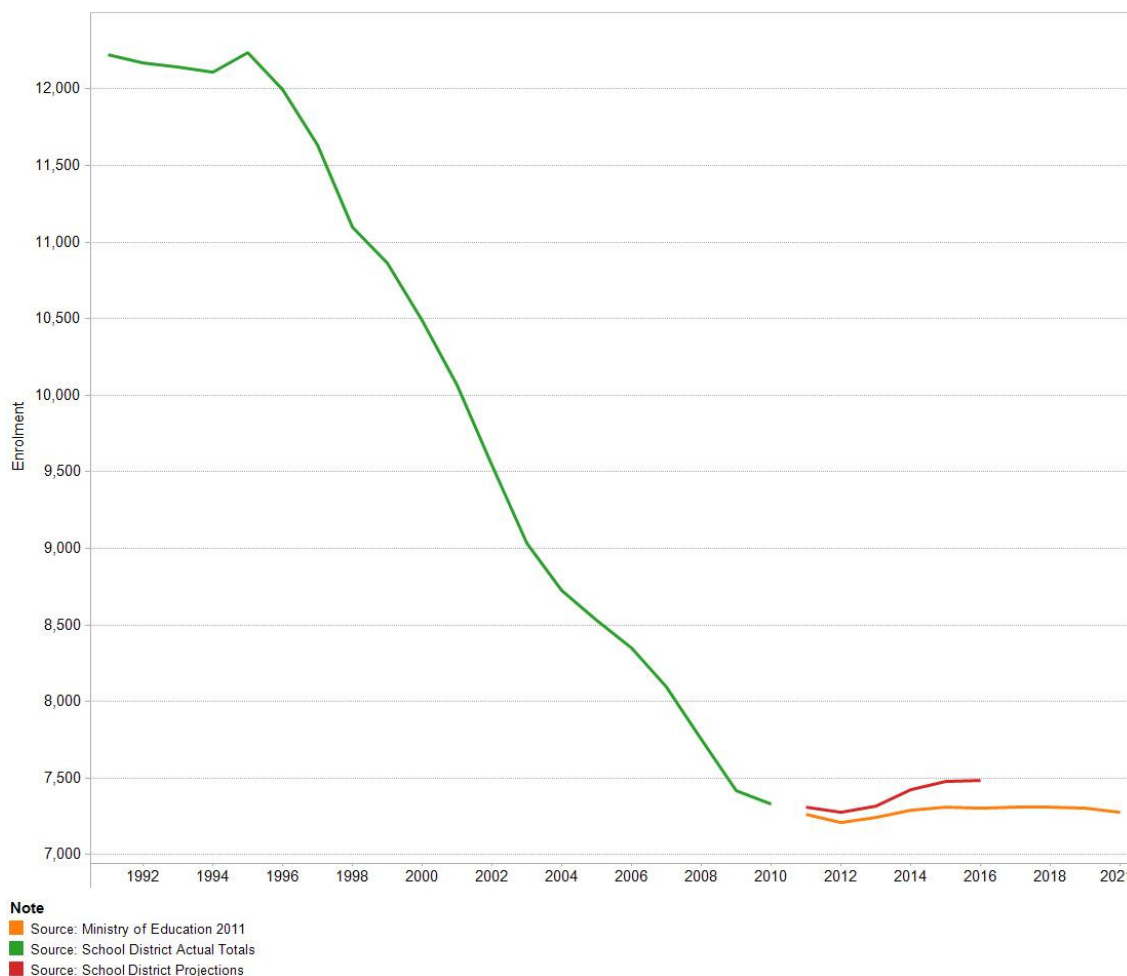


There is a difference in these figures between the actual and projections, which appear to be due to the alternative programs being reported in a different manner. At any rate, the secondary school enrolment has been declining, and is projected to keep doing so until about 2017.

Projected Enrolments – School District

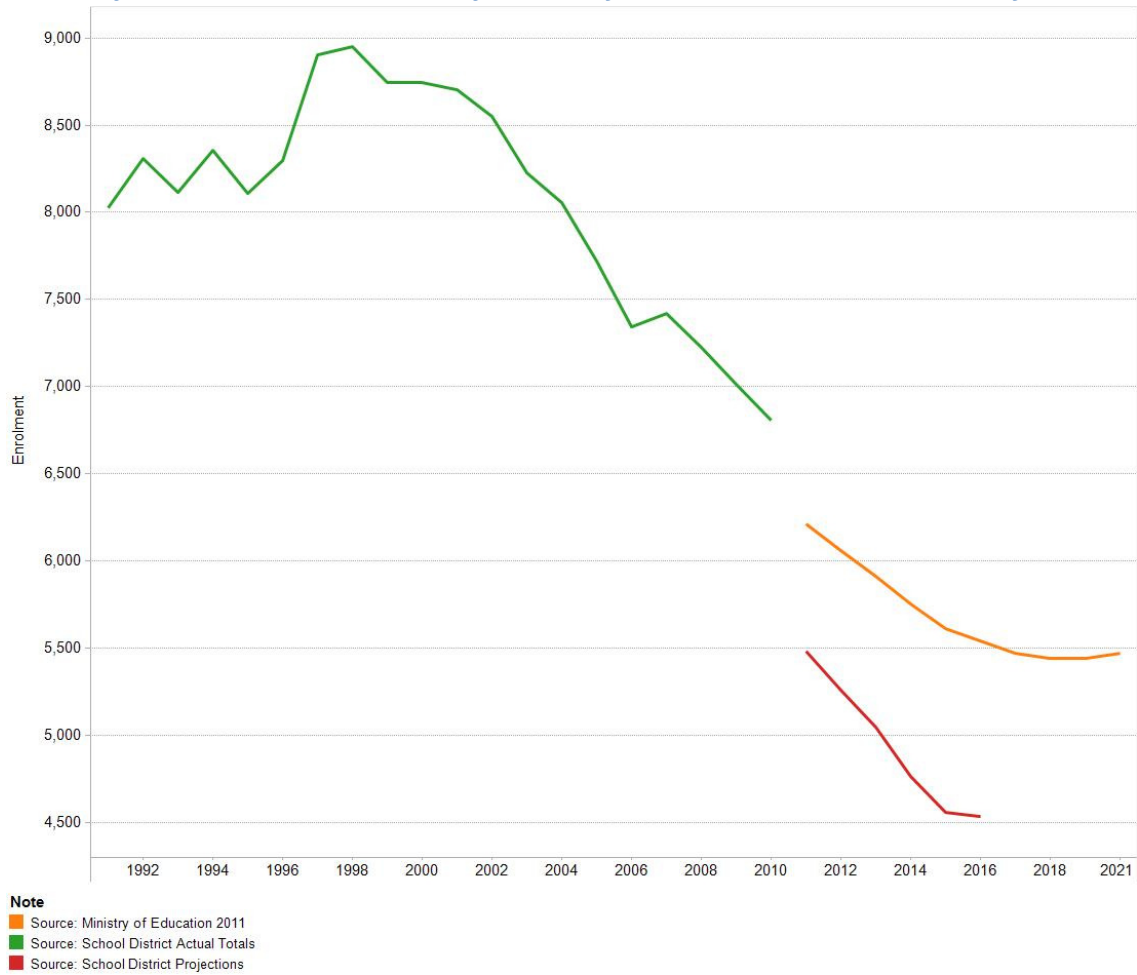
What is the difference between the total projections for the Ministry of Education and the School District?

Elementary Enrolment – Actual, Ministry 2011 Projections, School District 2011 Projections



There is not a large difference in the projections for elementary school students. The school district is showing an even higher increase in elementary school enrolment than the Ministry of Education is.

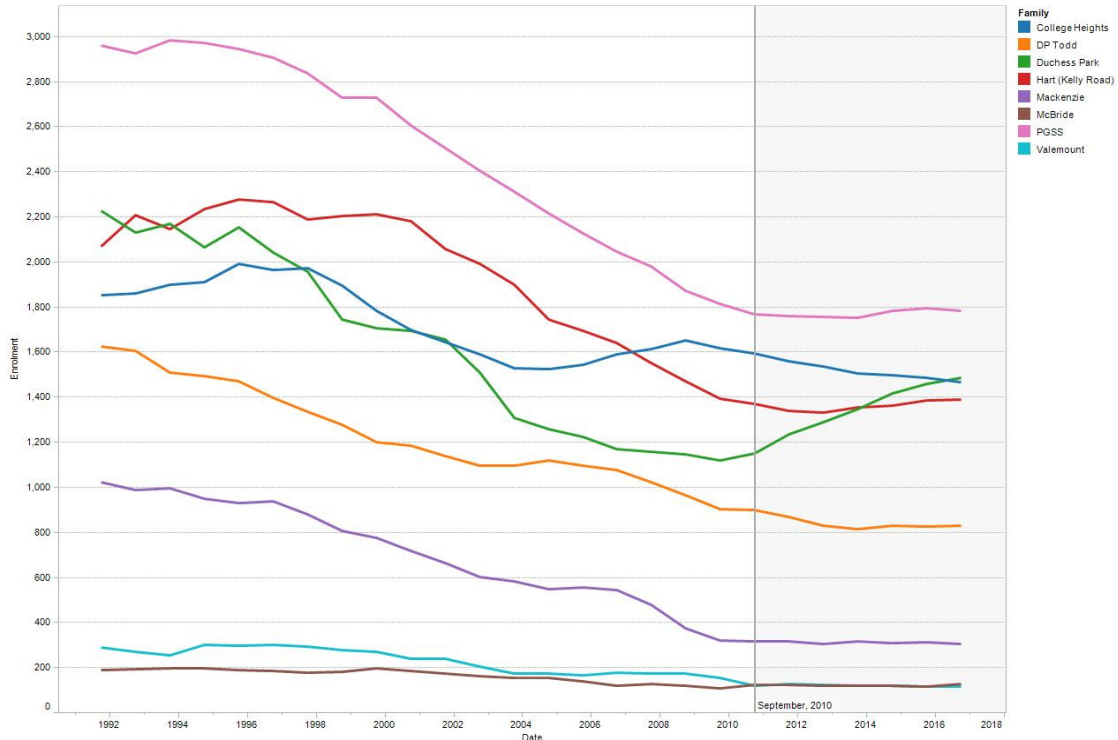
Secondary Enrolment – Actual, Ministry 2011 Projections, School District 2011 Projections



The school district projections available do not show the alternative programs, and are therefore not directly comparable. They have been included, as the school district projections show a steeper decline in enrolment than do the Ministry projections.

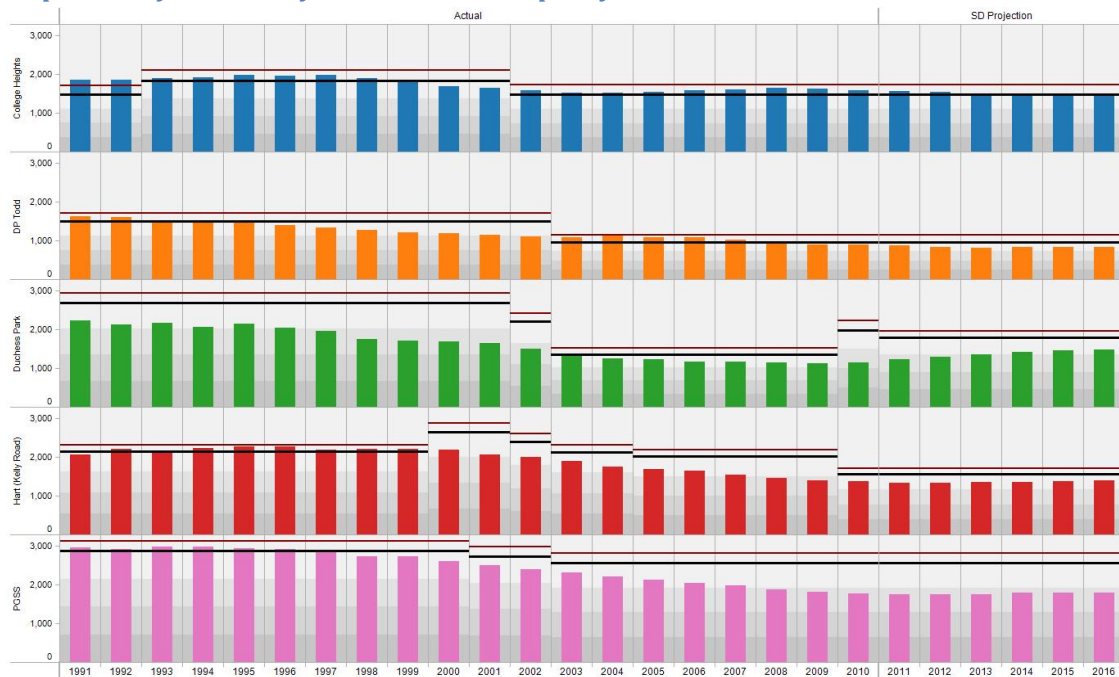
What are the school district enrolment projections for school family groups, as compared to capacity?

Elementary Enrolment - Actual and School District 2011 Projections



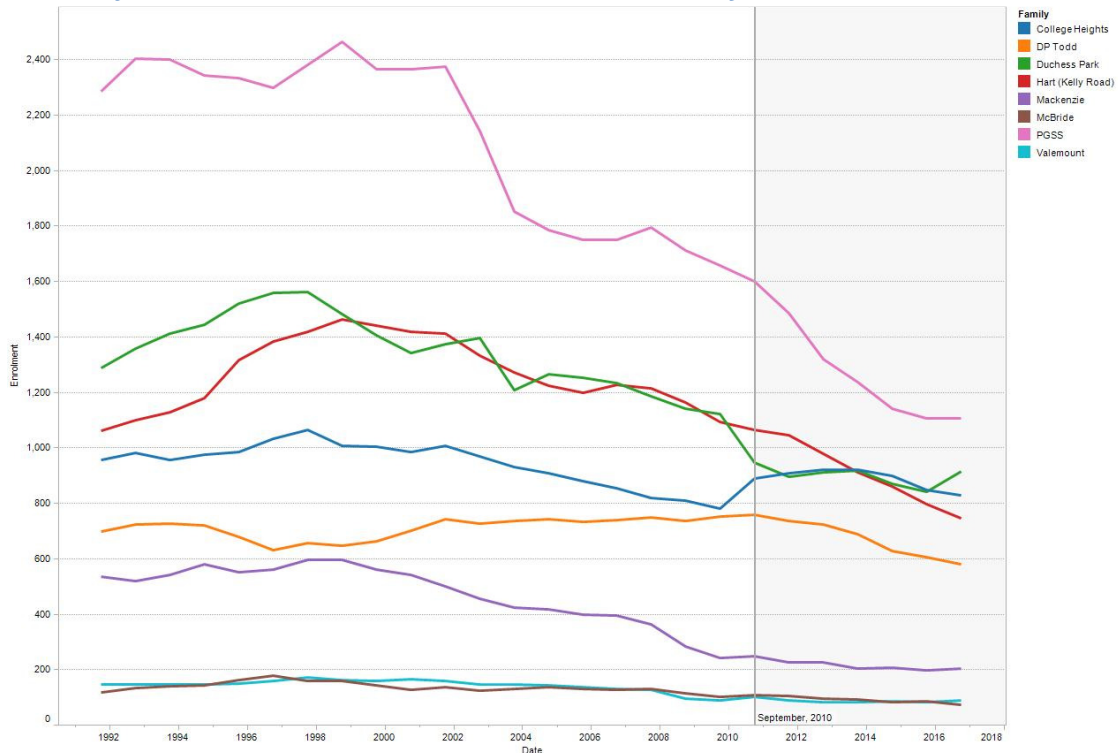
In these projections, the Duchess Park family group sees a large increase in students, while College Heights sees a decrease. All other family groups remain more or less constant.

Comparison of elementary enrolment and capacity



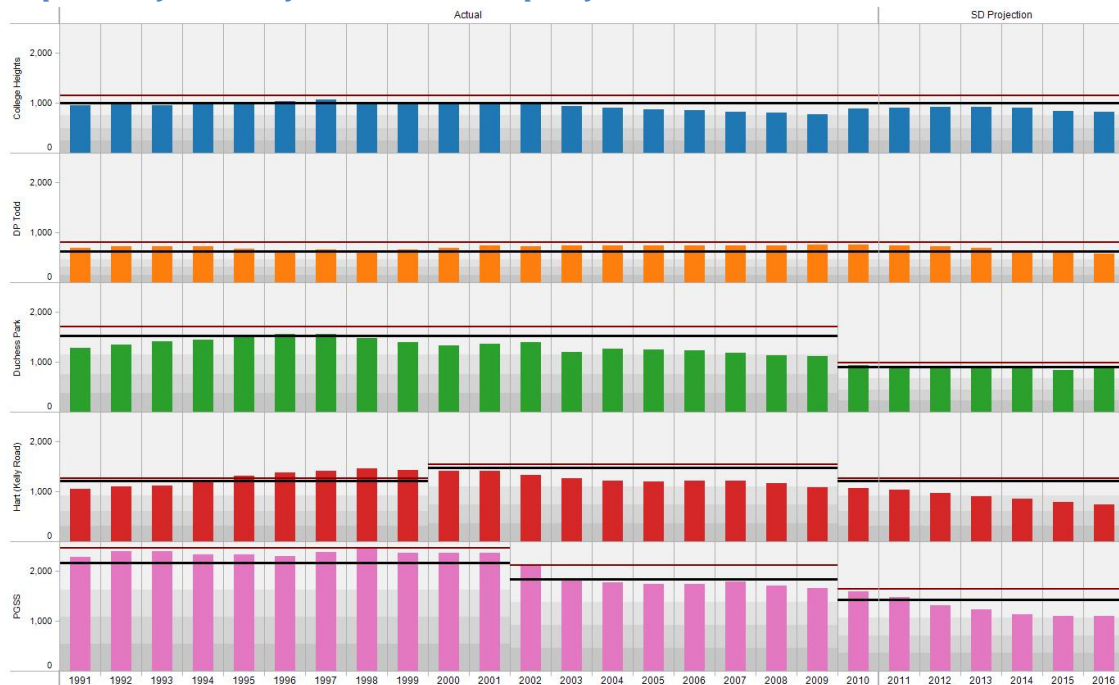
College Heights decreases to only filling schools to their nominal capacity, while Duchess Park increases from slightly over 50% of capacity to slightly over 75% of capacity.

Secondary Enrolment – Actual and School District 2011 Projections



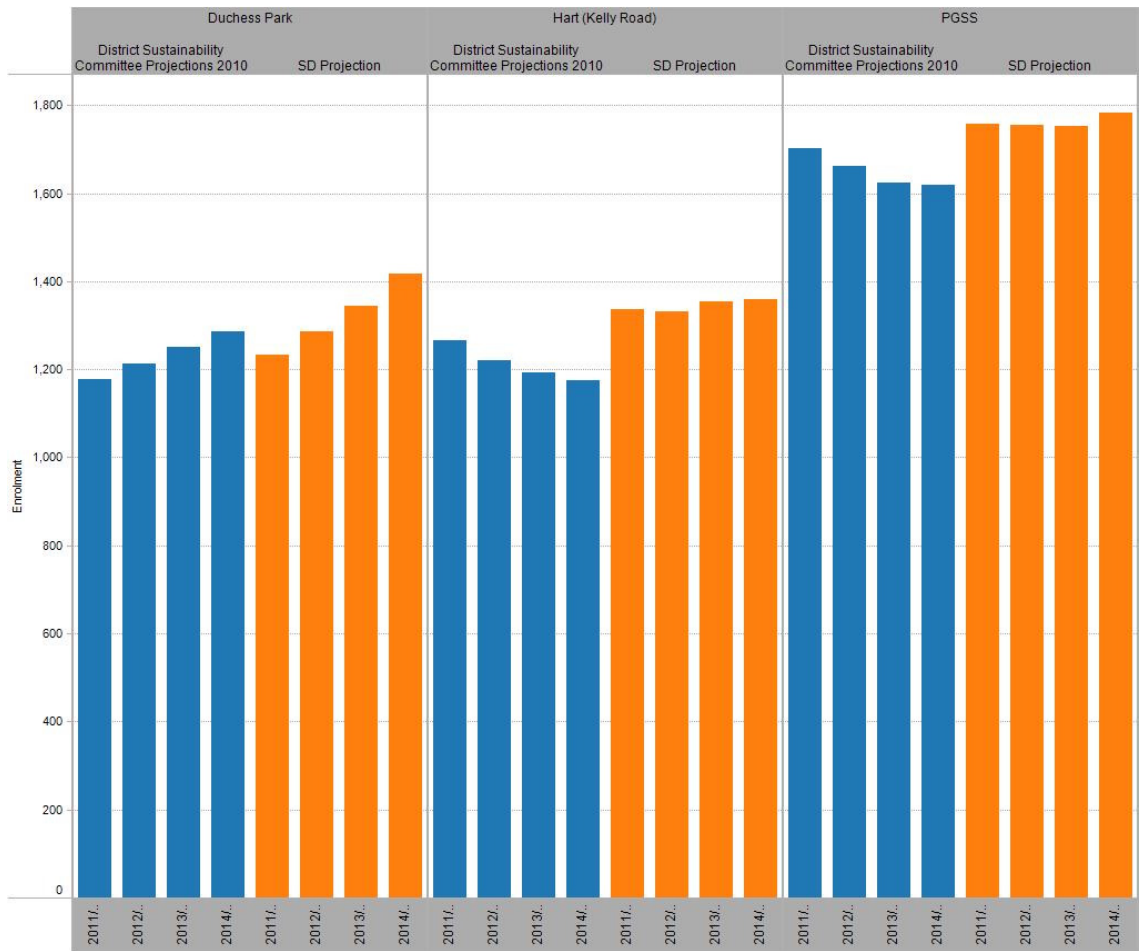
While Prince George secondary schools are at capacity in 2010, they are projected to fall in enrolment, especially for Kelly Road and PGSS.

Comparison of secondary enrolment and capacity

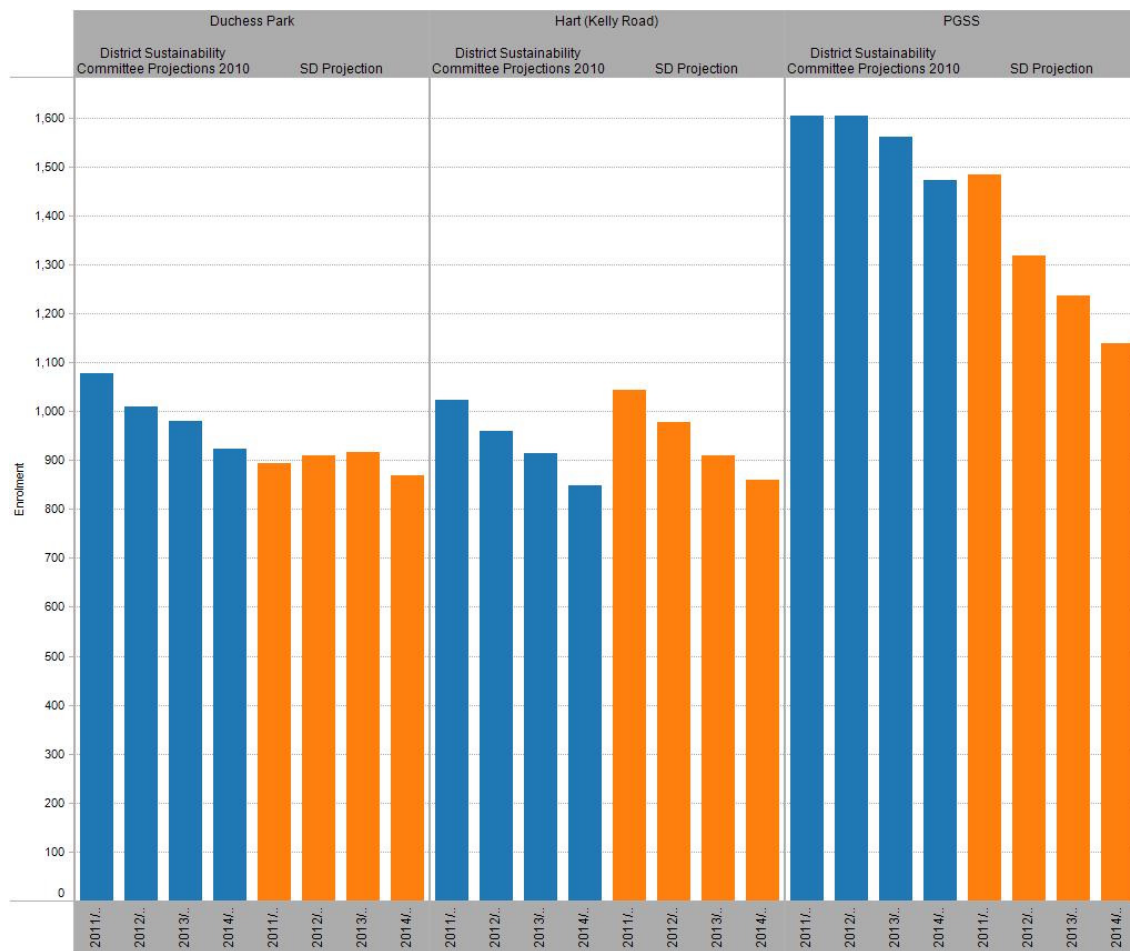


Are there differences in the projections shown in the District Sustainability report and the current district projections?

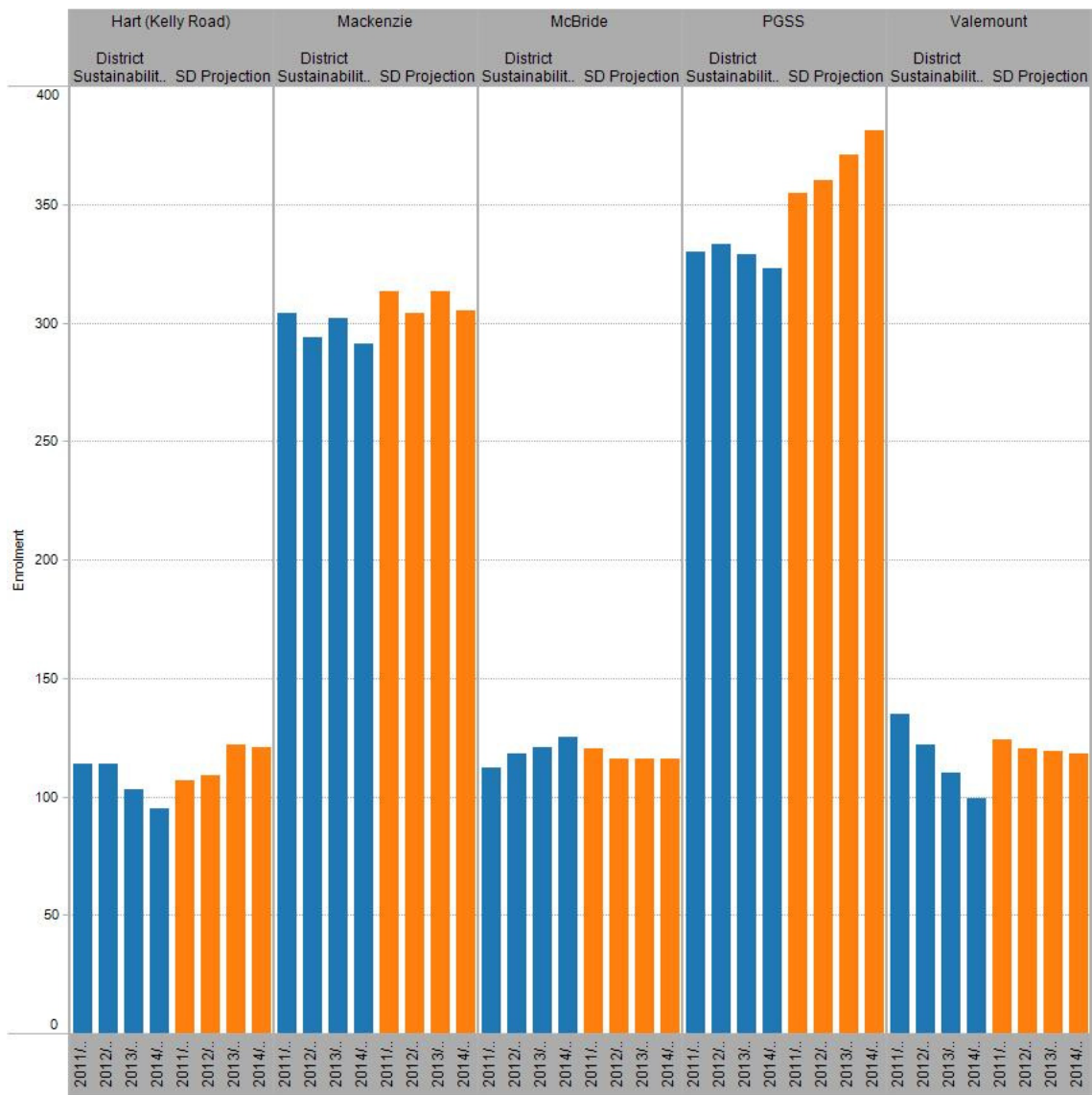
When looked at in family groups, there are three family groups that show more than a minor difference between the DSC projections and the 2011 projections for elementary schools – Duchess Park, Kelly Road, and PGSS. All three groups show more students in the 2011 school district projections than the 2010 projections.



Due to the closure of the junior secondary schools and the reallocation of students, the secondary school enrolment projections are not directly comparable.



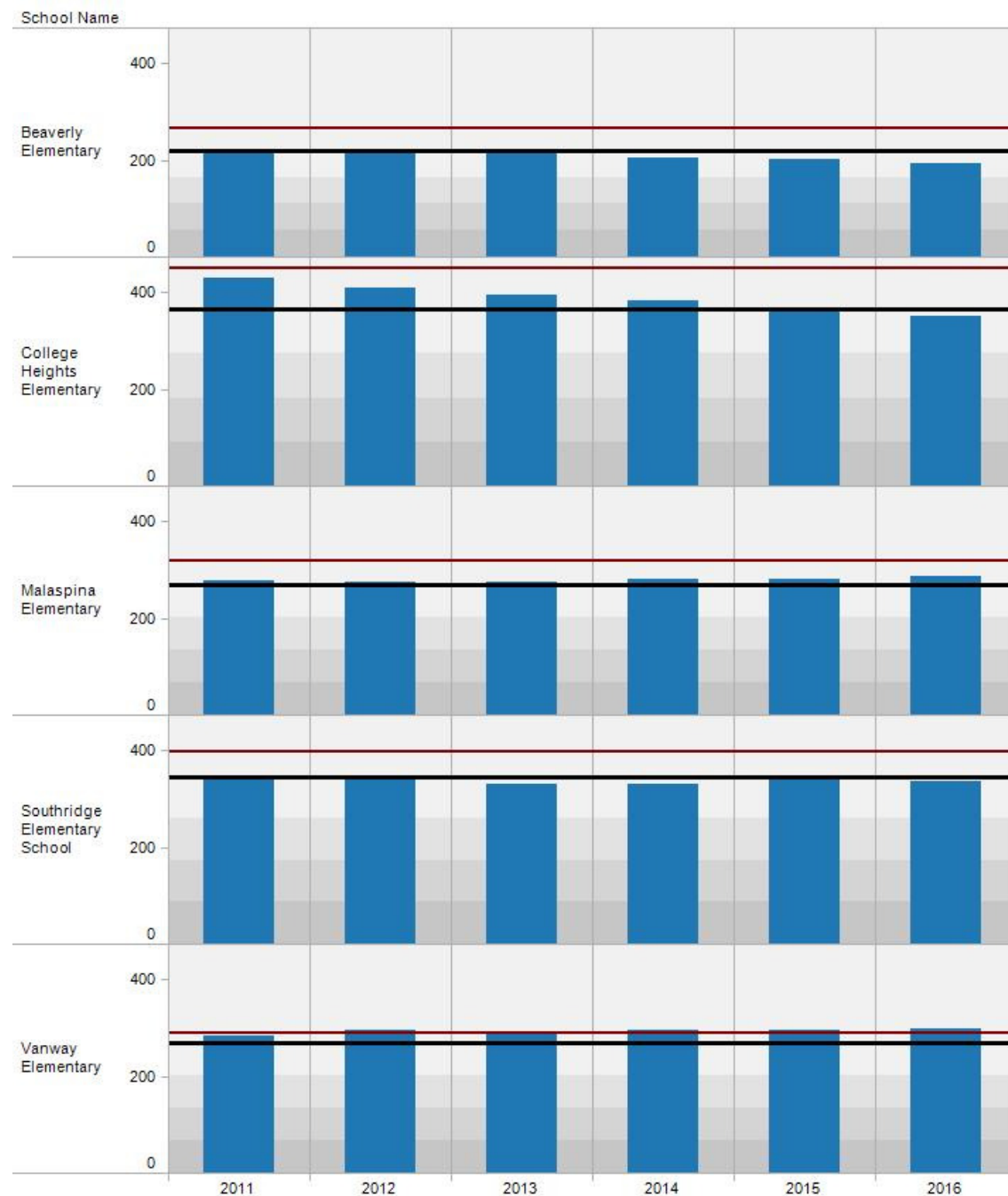
There are some differences for the schools receiving the small communities grant in each family.



These schools would include those in Mackenzie, McBride, and Valemount, as well as Nukko Lake, Salmon Valley, Shady Valley, Giscombe, Hixon, Buckhorn, and Pineview.

Individual School and Capacity Issues

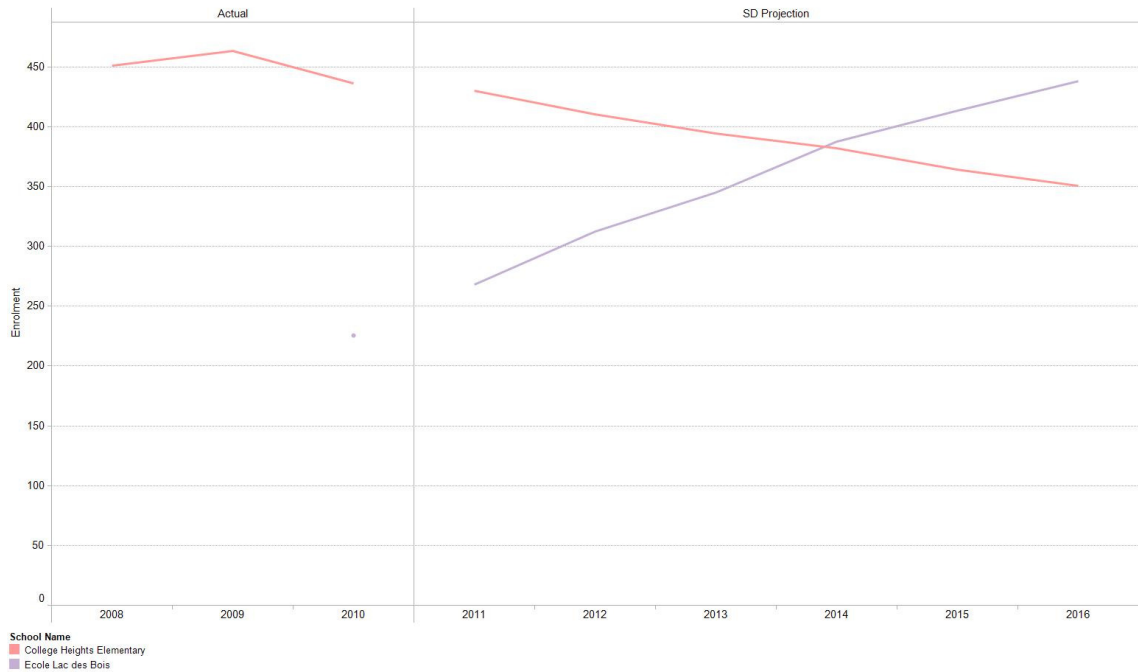
College Heights Elementary Schools



Elementary schools in the College Heights area are currently either at nominal or close to working capacity. Enrolment in this area has increased since 2003. The projections show a slight decrease from nominal capacity at Beverly, a decline for College Heights elementary to below nominal, an increase at Malaspina (where there is a new modular/portable installed), Southridge staying at nominal capacity, and no room for growth at Vanway. If additional growth takes place in this part of the city, more capacity will be required for elementary schools in this area.

Note that College Heights Elementary had its registration capped for 2011, as well as transfers in for French immersion in other grades. There is more demand for enrolment than there is space at this school. In 2012, both College Heights Elementary and Vanway Elementary have had kindergarten registration limited.

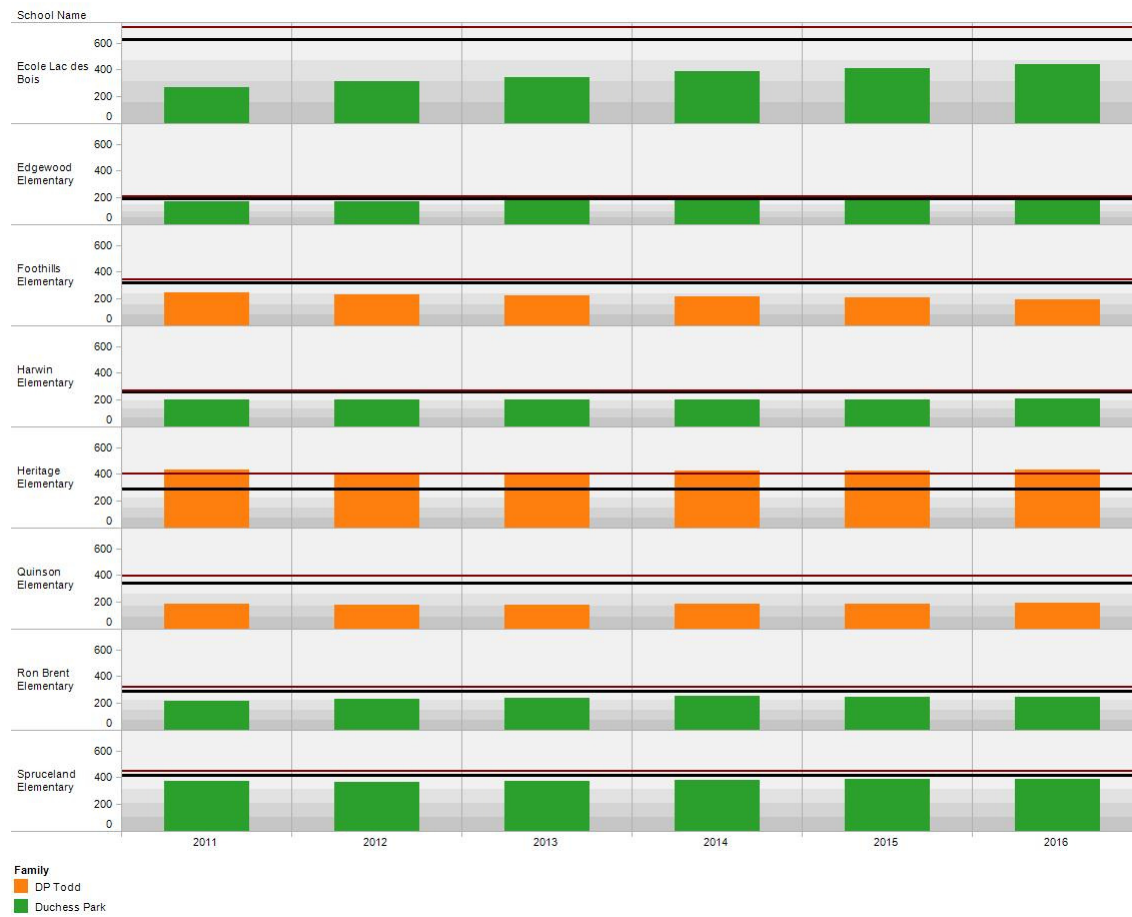
The French immersion students turned away from College Heights appear to be the primary source of the growth for École Lac des Bois:



Duchess Park and DP Todd

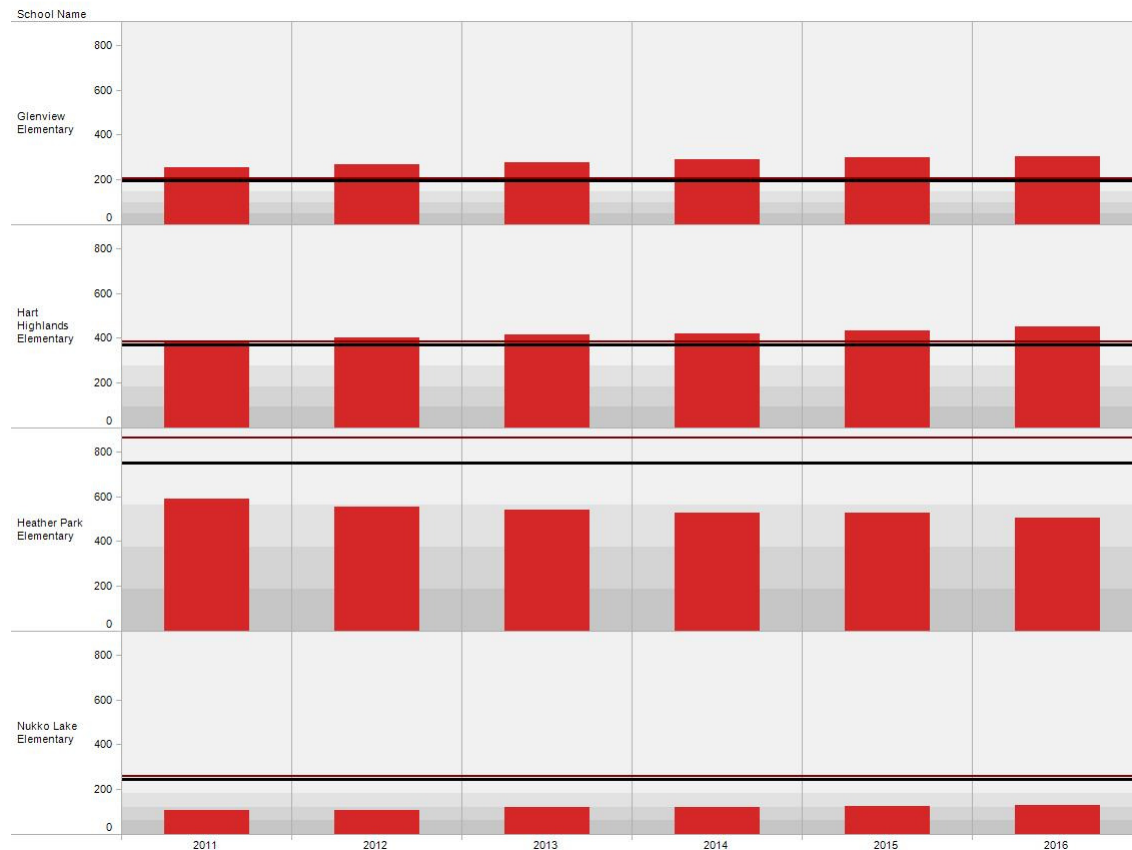
While it may seem as though there is a great deal of elementary capacity in the Duchess Park family, this is primarily due to extra space in the single track French immersion school.

Heritage Elementary is shown as being beyond nominal capacity, and in some years, beyond working capacity. Registration at Heritage has been capped in 2012.



Note: the nominal and working capacity for Lac des Bois has not been adjusted for use as an elementary school. The real capacity for this schools is lower than shown.

Kelly Road Elementary Schools



Note: this graph shows Glenview with one modular/portable, adding 30 students to its working capacity.

Heather Park Elementary, the largest elementary school in the district, is showing a constant decline in student enrolment in the school district projections. However, this decline seems to be only made possible by increasing enrolment at Glenview and Hart Highlands to well over capacity. While there is a modular/portable newly installed at Glenview, it would not be large enough to fit the growth shown. For example, in 2016/17, the projected enrolment at Glenview is 302 students, with a nominal capacity of 196. Even with the extra modular, the working capacity would be at most 234 students – requiring at least three other portables to fit all these students into this school. Hart Highlands would have a projected enrolment in 2016/17 of 451, and a working capacity of 385 – a difference of 66 students.

It is unclear if these projections are calculated based on the drop at Heather Park Elementary in 2011/12. This large drop was due to a large number of grade 6 students from the former middle school, who had stayed at the elementary school for 2010/11. To give an indication, in 2010/11, there were 98 grade 6 students, but 166 grade 7 students at Heather Park. That year Glenview Elementary had 26 grade 6 students and 4 grade 7 students, while Hart Highlands had 42 grade 6 students and 22 grade 7 students.

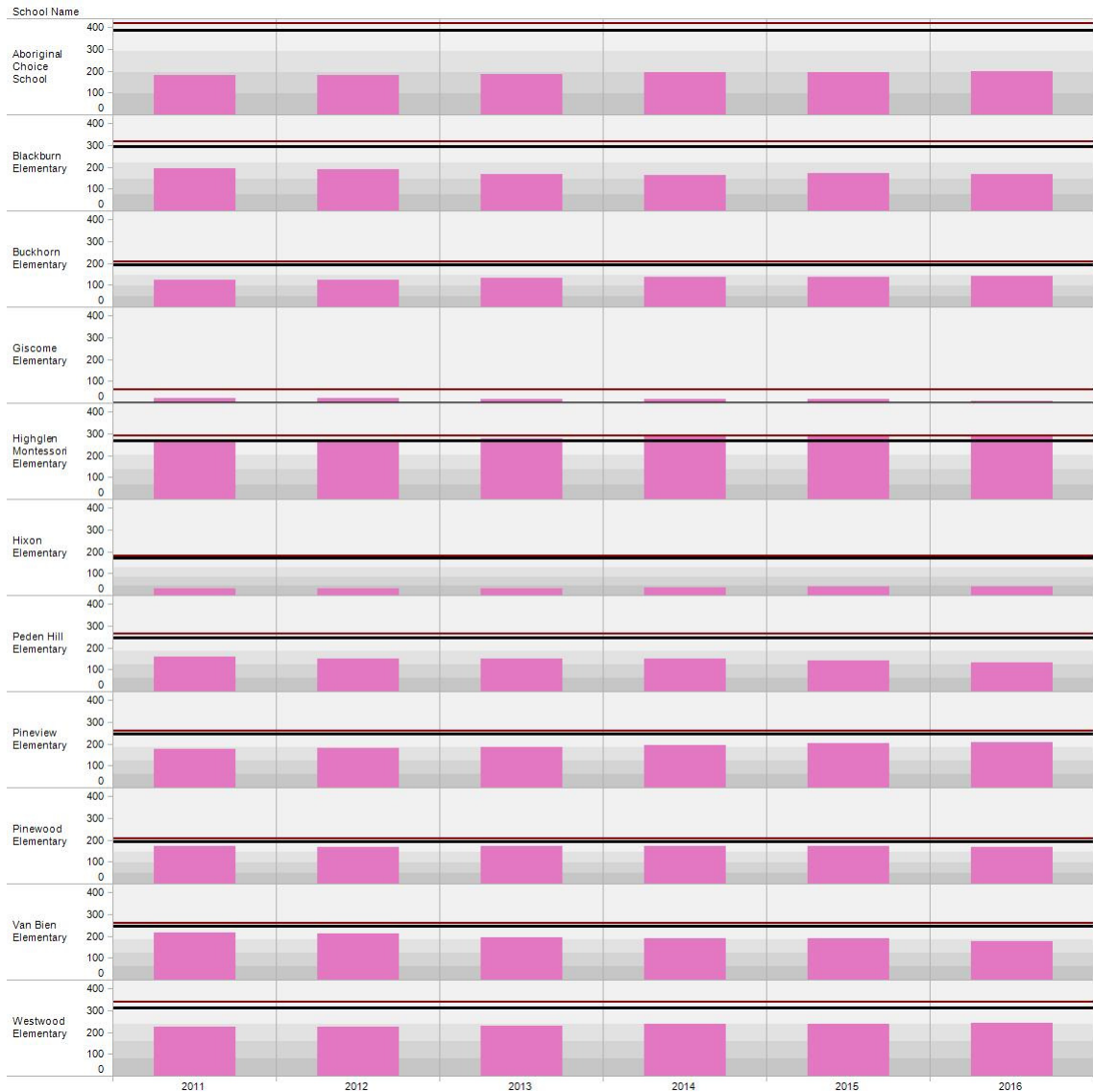
If Glenview and Hart Highlands were capped at their working capacity, and those excess students transferred to Heather Park, then Heather Park would increase in size from a projected 611 students in 2011/12, to 639 students in 2016/17.

It is important to note that the nominal and working capacity shown for Heather Park is based on it being a middle school, with a maximum class size of 30 students. Given the large numbers of kindergarten students currently registered at the school, the capacity of this school is much less than is shown in this report.

Both Hart Highlands and Glenview have had their registration capped in 2012.

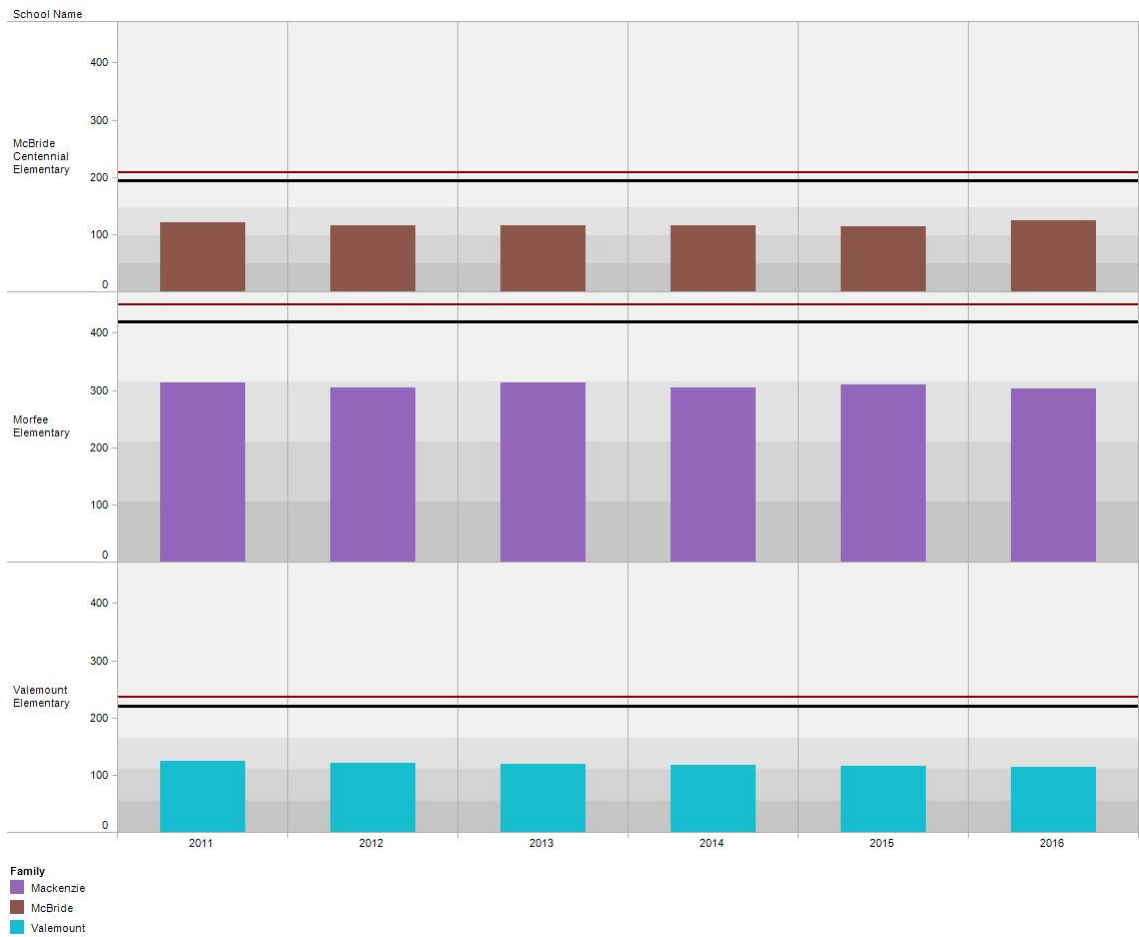
As with College Heights, if additional growth takes place in this part of the city, more capacity will be required for elementary schools in this area.

PGSS Elementary Schools



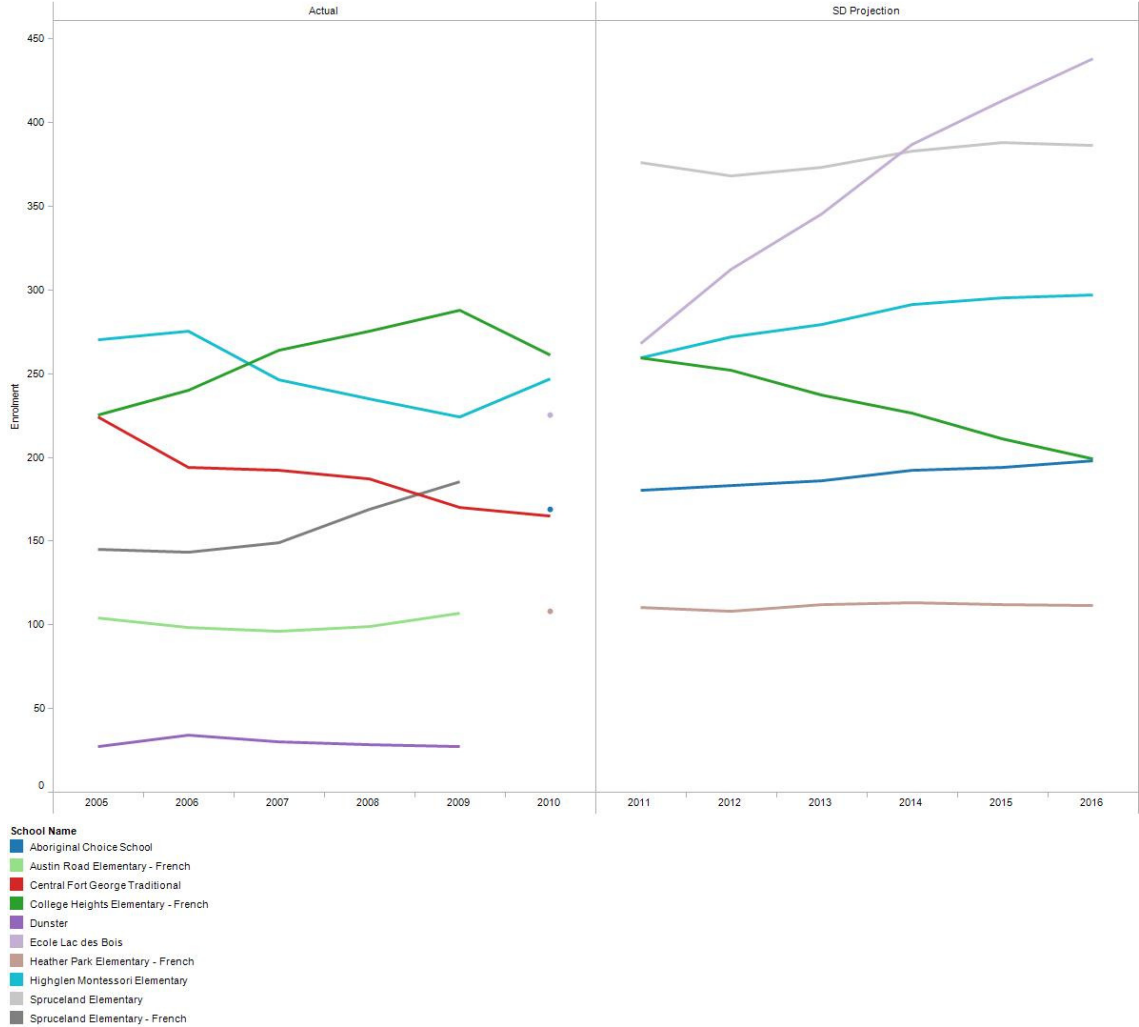
This family has a large number of schools at less than capacity, and one school with capacity issues.

Mackenzie, McBride, Valemount Schools



Mackenzie has seen a large number of elementary schools closed. Given the cyclical nature of the town and the lack of alternatives should the population suddenly increase, attention will need to be paid in the future to possible capacity issues.

District Choice Schools and Programs



Recommendations

The District Parent Advisory Council suggests that an ongoing education sustainability committee, with partner group/critical stake holder representation, be formed to monitor and assess enrolment changes, school capacity, and any significant events that could affect school district operations.

It is apparent that the impact of declining enrolment that led to the 2010 school closures had been visible for a number of years previously. The cancellation of the annual facilities grant made the situation urgent, but with the benefit of hindsight, school closures should have been looked at before 2009 in order to avoid the unnecessarily disruptive process that was undergone in 2010. The District Parent Advisory Council wishes to work with the district to ensure that such drastic circumstances need not be faced again.

As an example, it appears that elementary school capacities are being reached or exceeded in some areas, while other areas have excess capacity. Should a school be re-opened? Should any additional schools be closed? What is the cost to add a portable to a school, as compared to the cost to reopen a closed school? Is housing students in portables or modular classrooms a viable solution? Is transporting children to a different area of the district a reasonable method to deal with capacity issues? What can be done as secondary school enrolment decreases and elementary school enrolment increases? What impact will the April 2011 BC Supreme Court decision on the Education Services Collective Agreement Act (Bill 27) and the Public Education Flexibility and Choice Act (Bill 28) have on class sizes, and therefore the capacity of schools?

The district policy 5119, for student registration and transfers, was recently revised. This revised policy gives more emphasis to catchment for regular schools and programs, rather than allowing children to register in whichever school they wish. This policy will be more used in the future, given the implementation of full time kindergarten, the increased numbers in the building of classes, growth in different areas of the city, and the upcoming increase in elementary school aged children across the district. Some schools will not have any room for additional children, and some schools would be faced with an inability to add more children without rebuilding classes and adding teachers. The revised policy does not appear to give the school district any clear responsibility to transport children to a school that they can be accommodated in, should their catchment school (or other local schools) be too full to fit them. The school district may have unwritten, customary policies as to how this issue is handled – but it is the written policy that must be followed.

It is unclear if any record is kept when children are turned away from a school due to capacity issues. DPAC is hearing of a number of parents having problems getting their children into schools, but this is only anecdotal evidence.

The District Parent Advisory Council would like to see an annual report be created on the condition of our district's student enrolment and capacity. This report would be delivered to the school board at a public board meeting, prior to kindergarten registration and the start of the district transfer process, and would also be in time to provide assistance when preparing the following year's budget. The report would provide information on any caps on registration or transfers, and would also provide the board and the public with information on any issues with capacity.

Appendix A: Historic Enrolments

	1991/92	1992/93	1993/94	1994/95	1995/96	1996/97	1997/98	1998/99	1999/20..	2000/01	2001/02	2002/03	2003/04	2004/05	2005/06	2006/07	2007/08	2008/09	2009/10	2010/11	2011/12
Alternate	Alternate Community Programs												384	389	397	358	350	390	438	462	427
	Camp Trapping	12	13	8	12	10	13	11	12	13	12	14	11	10	11	12	6	5	10	11	10
	Central Interior Career & Tech Ce..							57	100												
	Central Interior Distance Ed.	439	431	435	431		529	386	399	370	307	223	149	96	86						
	CIDES - District 57 Connect							52	57	54	53	129	209	198	194	178	326	373	372	238	508
	Continuing Education	444	458	170	333	353	418	298	457	433	515	582	853	757	718	529	320	332	379	334	366
	I C C R	7	6	4	8	7	7	5	6	7	7	8	7	12	6	5					
	Prince George Youth Centre	44	41	52	44	52	65	60	61	48	50	45	41	16	27	28	23	28	29	23	18
	Total	946	949	669	828	422	503	903	974	1,014	1,109	1,007	1,267	1,538	1,444	1,250	891	1,042	1,175	1,183	1,100
	Total	946	949	669	828	422	503	903	974	1,014	1,109	1,007	1,267	1,538	1,444	1,250	891	1,042	1,175	1,183	1,100
College Heights	Beaverly Elementary	275	290	299	299	309	312	313	298	272	257	252	252	241	231	226	226	239	243	248	231
	College Heights Elementary	444	445	399	376	394	365	371	353	349	298	291	319	336	356	384	410	435	451	463	436
	Gladstone Elementary	379	376	261	258	234	251	257	226	212	186										
	Haldi Road Elementary	65	67	73	73	78	81	91	94	82	75	75									
	Malaspina Elementary	457	430	414	410	407	386	359	335	274	255	236	326	286	268	267	268	271	289	268	275
	Southridge Elementary School			191	227	276	301	317	326	338	352	360	392	402	397	385	390	377	373	351	360
	Vanway Elementary	230	250	260	267	290	268	264	260	254	253	244	298	260	270	281	296	291	294	287	291
	Total	1,850	1,858	1,897	1,910	1,988	1,964	1,972	1,892	1,781	1,695	1,644	1,587	1,525	1,522	1,543	1,590	1,613	1,650	1,617	1,593
	College Heights Secondary	954	979	956	973	983	1,031	1,064	1,006	1,003	982	1,006	968	930	906	879	854	817	808	779	887
	Total	954	979	956	973	983	1,031	1,064	1,006	1,003	982	1,006	968	930	906	879	854	817	808	779	887
DP Todd	Total	2,804	2,837	2,853	2,883	2,971	2,995	3,036	2,898	2,784	2,677	2,650	2,555	2,455	2,428	2,422	2,444	2,430	2,458	2,396	2,480
	Foothills Elementary	376	368	336	340	338	325	311	284	270	263	250	226	367	340	338	341	302	299	271	267
	Heritage Elementary	377	381	377	350	328	322	306	305	305	304	264	259	418	443	441	441	427	413	427	435
	Highland Traditional Elementary	320	295	268	276	290	275	277	251	207	214	192	183								
	Meadow Elementary	195	200	192	202	199	183	171	174	182	173	176	166								
	Quinson Elementary	356	361	336	324	315	292	267	260	234	228	254	261	308	334	314	291	291	251	203	195
	Total	1,624	1,605	1,509	1,492	1,470	1,397	1,332	1,274	1,198	1,182	1,136	1,095	1,093	1,117	1,093	1,073	1,020	963	901	897
	D P Todd Secondary	697	723	726	720	677	629	656	647	661	699	740	724	735	740	733	738	747	736	750	758
	Total	697	723	726	720	677	629	656	647	661	699	740	724	735	740	733	738	747	736	750	758
	Total	2,321	2,328	2,235	2,212	2,147	2,026	1,988	1,921	1,859	1,881	1,876	1,819	1,828	1,857	1,826	1,811	1,767	1,699	1,651	1,655

	1991/92	1992/93	1993/94	1994/95	1995/96	1996/97	1997/98	1998/99	1999/20..	2000/01	2001/02	2002/03	2003/04	2004/05	2005/06	2006/07	2007/08	2008/09	2009/10	2010/11	2011/12
Duchess Park	Central Fort George Traditional	182	164	171	146	148	131	124	134	149	155	171	165	206	229	224	194	192	187	170	165
	Ecole Lac des Bois																			225	300
	Edgewood Elementary	83	79	79	68	75	68	72	78	74	93	97	231	229	200	198	178	176	173	153	158
	Harwin Elementary	197	193	193	193	218	184	176	171	157	159	166	228	257	243	217	215	215	186	187	194
	King George V Elementary	402	356	318	292	290	267	243	132	121	120	120	110								
	Lakewood Elementary	241	250	252	264	270	268	277	242	224	230	214	217								
	Nechako North Elementary	238	251	256	244	257	262	250	238	235	227	203									
	Ron Brent Elementary	253	256	290	271	292	300	250	176	220	207	198	223	227	205	227	242	218	225	224	208
	Seymour Elementary	201	171	171	158	178	153	140	163	154	164	156									
	Spruceland Elementary	428	407	437	425	425	406	423	409	370	338	328	334	386	380	357	337	356	373	385	198
	Total	2,225	2,127	2,167	2,061	2,153	2,039	1,955	1,743	1,704	1,693	1,653	1,508	1,305	1,257	1,223	1,166	1,157	1,144	1,119	1,148
	Duchess Park Secondary	824	847	877	912	969	987	1,043	995	979	944	972	988	886	892	884	874	871	871	855	944
	Lakewood Jr Secondary																				
	Lakewood Junior Secondary	463	508	532	530	549	571	516	487	426	396	400	408	319	371	368	359	314	270	266	
	Total	1,287	1,355	1,409	1,442	1,518	1,558	1,559	1,482	1,405	1,340	1,372	1,396	1,205	1,263	1,252	1,233	1,185	1,141	1,121	944
	Total	3,512	3,482	3,576	3,503	3,671	3,597	3,514	3,225	3,109	3,033	3,025	2,904	2,510	2,520	2,475	2,399	2,342	2,285	2,240	2,092
Hart (Kelly Road)	Austin Road Elementary	433	456	465	471	489	475	477	462	477	354	366	353	351	320	322	348	320	308	316	
	Bear Lake Elementary	44	43	43	41	41	42	29	32	32	31	25	22	21	13						
	Glenview Elementary	176	182	168	187	175	203	204	199	198	166	163	137	185	163	156	140	138	125	127	218
	Hart Highlands Elementary	348	398	377	397	396	376	373	371	402	295	254	350	371	330	342	346	323	292	262	352
	Hart Highway Elementary	278	304	291	300	297	298	268	269	245	182	154									
	Heather Park Elementary																				694
	HPMS (grades 6 and 7)									518	508	536	503	468	501	450	432	424	416		595
	Nukko Lake Elementary	185	201	215	221	244	229	228	235	210	151	130	134	140	147	109	100	104	91	81	104
	Salmon Valley Elementary	74	94	76	86	79	79	69	80	84	77	65	66	60	50	35	28	22	29	31	
	Shady Valley Elementary	92	87	76	86	86	88	85	89	107	83	79	89	59	52	55	50	48	48	22	
	Springwood Elementary	229	237	236	250	271	274	268	266	262	194	181	169	206	200	172	175	163	151	137	
	Wildwood Elementary	208	205	196	193	196	198	185	197	194	129	132	133								
	Total	2,067	2,207	2,143	2,232	2,274	2,262	2,186	2,200	2,211	2,180	2,057	1,989	1,896	1,743	1,692	1,637	1,550	1,468	1,392	1,368
	HPMS (grade 8)									260	254	269	252	234	229	262	258	213	210		
	Kelly Road Secondary	1,059	1,099	1,126	1,179	1,316	1,383	1,417	1,462	1,438	1,158	1,156	1,061	1,018	988	968	963	956	950	882	1,062
	Total	1,059	1,099	1,126	1,179	1,316	1,383	1,417	1,462	1,438	1,418	1,410	1,330	1,270	1,222	1,197	1,225	1,214	1,163	1,092	1,062
	Total	3,126	3,306	3,269	3,411	3,590	3,645	3,603	3,662	3,649	3,598	3,467	3,319	3,166	2,965	2,889	2,862	2,764	2,631	2,484	2,430

	1991/92	1992/93	1993/94	1994/95	1995/96	1996/97	1997/98	1998/99	1999/20..	2000/01	2001/02	2002/03	2003/04	2004/05	2005/06	2006/07	2007/08	2008/09	2009/10	2010/11	2011/12
Mackenzie	Mackenzie Elementary	338	344	333	315	300	321	301	268	250	219	174	332	316	290	294	288	247	191	163	
	McLeod Lake Elementary	36	38	46	40	54	39	31	25	29	28	25	17								
	Morfee Elementary	384	357	380	370	343	363	336	297	299	264	255	250	266	256	261	254	231	181	155	313
	Mountain View Elementary	264	247	236	221	230	214	210	213	196	204	208									347
	Total	1,022	986	995	946	927	937	878	803	774	715	662	599	582	546	555	542	478	372	318	313
	Mackenzie Secondary	534	519	540	580	549	560	593	595	558	540	498	455	421	417	396	395	363	281	241	247
McBride	Total	534	519	540	580	549	560	593	595	558	540	498	455	421	417	396	395	363	281	241	247
	Total	1,556	1,505	1,535	1,526	1,476	1,497	1,471	1,398	1,332	1,255	1,160	1,054	1,003	963	951	937	841	653	559	560
	McBride Centennial Elementary	186	191	196	196	186	184	177	179	195	183	171	159	151	154	136	119	124	116	105	122
	Total	186	191	196	196	186	184	177	179	195	183	171	159	151	154	136	119	124	116	105	122
	McBride Secondary	117	132	140	142	161	177	158	159	141	127	137	122	130	134	130	127	128	114	102	106
	Total	117	132	140	142	161	177	158	159	141	127	137	122	130	134	130	127	128	114	102	106
PGSS	Total	303	323	336	338	347	361	335	338	336	310	308	281	281	288	266	246	252	230	207	228
	Aboriginal Choice School																			169	145
	Blackburn Elementary	389	389	412	417	438	452	426	420	415	394	406	374	353	311	304	297	277	255	242	210
	Buckhorn Elementary	135	132	156	146	144	148	141	140	137	151	132	128	119	117	120	119	129	120	110	115
	Carney Hill Elementary	297	306	305	304	286	316	295	288	309	283	267	255	225	218	204	165	166	159	143	
	Dome Creek Elementary	11	17	12	8	10	10	9	11	9	6										
	Giscome Elementary	84	66	56	55	49	49	54	66	66	62	69	42	38	32	26	24	22	28	32	21
	Highglen Montessori Elementary	340	322	354	362	368	343	342	296	282	260	272	323	323	273	270	275	246	235	224	247
	Hixon Elementary	57	57	65	62	61	60	65	58	60	47	50	46	50	43	43	48	37	39	25	32
	Peden Hill Elementary	220	277	297	297	292	270	277	269	256	258	225	213	202	199	198	196	189	185	197	165
	Pineview Elementary	269	233	239	244	234	235	245	239	242	225	220	212	226	228	212	204	201	195	187	186
	Pinewood Elementary	200	204	182	175	176	177	175	173	194	200	191	194	205	208	199	188	191	175	174	175
	Red Rock Elementary	48	45	55	56	49	41	31	28	29	9										
	South Fort George Elementary	164	167	148	148	146	144	136	132	131	133	128	99								
	Upper Fraser Elementary	31	30	33	37	35	34	22	13												
	Van Bien Elementary	238	248	224	226	227	220	211	201	210	208	204	178	246	248	248	237	232	227	234	229
	Westwood Elementary	474	431	443	434	426	407	406	391	388	366	337	339	321	336	299	291	288	250	243	217
	Total	2,957	2,924	2,981	2,971	2,941	2,906	2,835	2,725	2,728	2,602	2,501	2,403	2,308	2,213	2,123	2,044	1,978	1,868	1,811	1,766
	Blackburn Jr Secondary	316	329	315	346	328	381	400	391	308	311	283									
	John McInnis Junior Secondary	522	492	478	470	481	479	466	448	442	435	433	427	439	455	463	450	420	419	359	
	Prince George Secondary School	1,446	1,582	1,606	1,526	1,523	1,436	1,515	1,623	1,612	1,617	1,656	1,714	1,412	1,327	1,284	1,298	1,374	1,290	1,296	1,599
	Total	2,284	2,403	2,399	2,342	2,332	2,296	2,381	2,462	2,362	2,363	2,372	2,141	1,851	1,782	1,747	1,748	1,794	1,709	1,655	1,599
	Total	5,241	5,327	5,380	5,313	5,273	5,202	5,216	5,187	5,090	4,965	4,873	4,544	4,159	3,995	3,870	3,792	3,772	3,577	3,466	3,365
Valemount	Dunster	48	36	31	39	31	33	36	35	39	36	34	31	25	27	27	34	30	28	27	
	Valemount Elementary	239	231	221	261	264	268	257	242	230	200	203	171	148	146	137	142	141	144	126	119
	Total	287	267	252	300	295	301	293	277	269	236	237	202	173	173	164	176	171	172	153	119
	Valemount Secondary	146	144	145	145	149	159	171	161	158	164	158	144	146	142	135	130	127	95	89	99
	Total	146	144	145	145	149	159	171	161	158	164	158	144	146	142	135	130	127	95	89	99
	Total	433	411	397	445	444	460	464	438	427	400	395	346	319	315	299	306	298	267	242	218

Appendix B: List of Closed Schools and Nominal Capacity

Family	Grade Type	Status	School Name	
College Heights	Elementary	Closed 2002	Gladstone Elementary	240
			Haldi Road Elementary	115
			Total	355
DP Todd	Elementary	Closed 2003	Highland Traditional Elementary	315
			Meadow Elementary	215
			Total	530
Duchess Park	Elementary	Closed 2002	Nechako North Elementary	215
			Seymour Elementary	265
		Closed 2003	King George V Elementary	530
			Lakewood Elementary	315
	Secondary	Closed 2011	Central Fort George Traditional	195
		Closed 2010	Lakewood Junior Secondary	625
			Total	2,145
Hart (Kelly Road)	Elementary	Closed 2002	Hart Highway Elementary	265
		Closed 2003	Wildwood Elementary	265
		Closed 2006	Bear Lake Elementary	115
		Closed 2010	Austin Road Elementary	315
			HPMS (grades 6 and 7)	500
			Salmon Valley Elementary	95
			Shady Valley Elementary	95
			Springwood Elementary	195
	Secondary	Closed 2010	HPMS (grade 8)	250
	Total			2,095
Mackenzie	Elementary	Closed 2002	Mountain View Elementary	215
		Closed 2003	McLeod Lake Elementary	115
		Closed 2010	Mackenzie Elementary	295
	Total			625
PGSS	Elementary	Closed 2001	Dome Creek Elementary	25
			Red Rock Elementary	115
			Upper Fraser Elementary	
		Closed 2003	South Fort George Elementary	165
		Closed 2010	Carney Hill Elementary	390
	Secondary	Closed 2002	Blackburn Jr Secondary	325
		Closed 2010	John McInnis Junior Secondary	425
	Total			1,445
Valemont	Elementary	Closed 2010	Dunster	50
	Total			50

Appendix C: List of Schools, Closure Status, and Capacity

Family	Grade Type	School Name	Status	Nominal Capacity	Working Capacity Plus Portables
College Heights	Elementary	Beverly Elementary	Open	220	266
		College Heights Elementary	Open	365	451
		Gladstone Elementary	Closed 2002	240	256
		Haldi Road Elementary	Closed 2002	115	123
		Malaspina Elementary	Open	270	319
		Southridge Elementary School	Open	345	399
		Vanway Elementary	Open	270	289
	Secondary	College Heights Secondary	Open	1,000	1,150
DP Todd	Elementary	Foothills Elementary	Open	320	343
		Heritage Elementary	Open	295	406
		Highland Traditional Elementary	Closed 2003	315	337
		Meadow Elementary	Closed 2003	215	230
		Quinson Elementary	Open	345	399
	Secondary	D P Todd Secondary	Open	625	809
Duchess Park	Elementary	Central Fort George Traditional	Closed 2011	195	268
		Ecole Lac des Bois	Open	625	719
		Edgewood Elementary	Open	195	208
		Harwin Elementary	Open	262	270
		King George V Elementary	Closed 2003	530	567
		Lakewood Elementary	Closed 2003	315	337
		Nechako North Elementary	Closed 2002	215	230
		Ron Brent Elementary	Open	295	318
		Seymour Elementary	Closed 2002	265	283
		Spruceland Elementary	Open	415	447
	Secondary	Duchess Park Secondary	Open	900	990
		Lakewood Jr Secondary	Closed 2010	625	719
		Lakewood Junior Secondary	Closed 2010	625	719
Hart (Kelly Road)	Elementary	Austin Road Elementary	Closed 2010	315	359
		Bear Lake Elementary	Closed 2006	115	123
		Glenview Elementary	Open	195	234
		Hart Highlands Elementary	Open	370	385
		Hart Highway Elementary	Closed 2002	265	283
		Heather Park Elementary	Open	750	863
		HPMS (grades 6 and 7)	Closed 2010	500	575
		Nukko Lake Elementary	Open	245	260
		Salmon Valley Elementary	Closed 2010	95	101
		Shady Valley Elementary	Closed 2010	95	101
		Springwood Elementary	Closed 2010	195	204
		Wildwood Elementary	Closed 2003	265	283
	Secondary	HPMS (grade 8)	Closed 2010	250	287
		Kelly Road Secondary	Open	1,225	1,260
Mackenzie	Elementary	Mackenzie Elementary	Closed 2010	295	316
		McLeod Lake Elementary	Closed 2003	115	123
		Morfee Elementary	Open	420	450
		Mountain View Elementary	Closed 2002	215	230
	Secondary	Mackenzie Secondary	Open	625	719

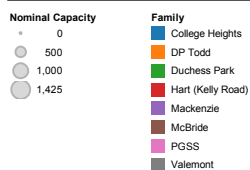
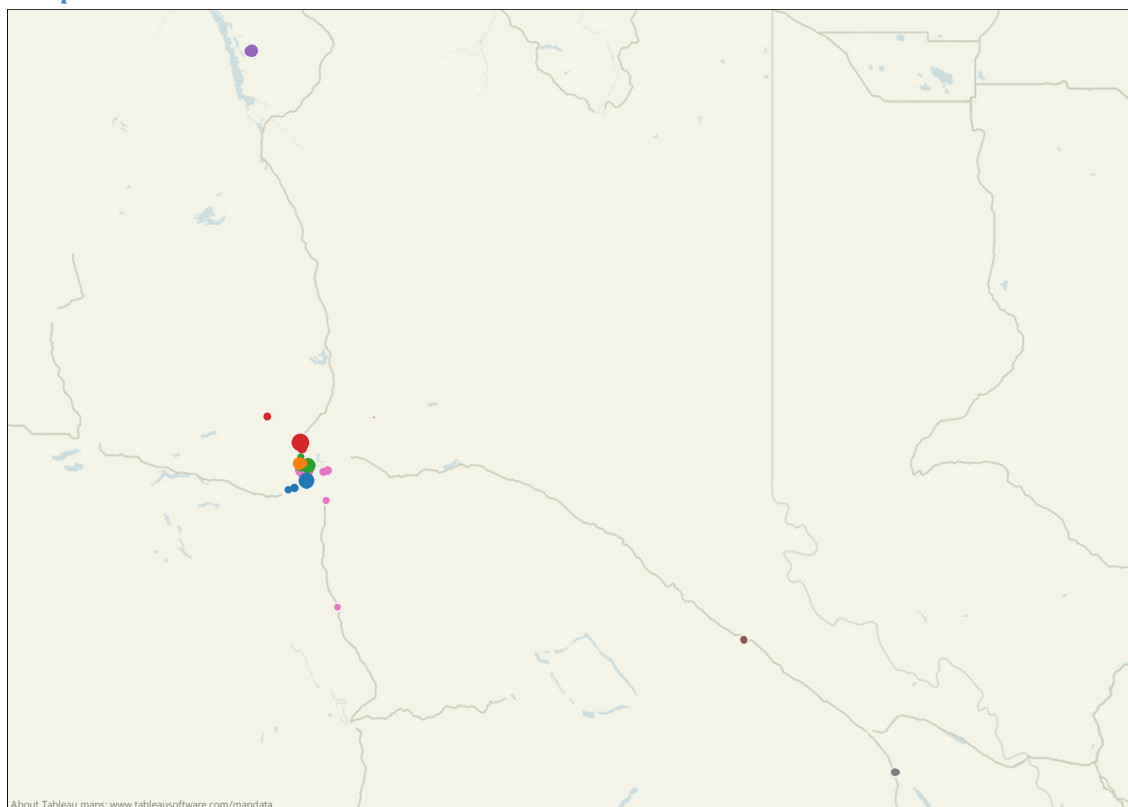
Family	Grade Type	School Name	Status	Nominal Capacity	Working Capacity Plus Portables
McBride	Elementary	McBride Centennial Elementary	Open	195	208
	Secondary	McBride Secondary	Open	150	173
PGSS	Elementary	Aboriginal Choice School	Open	390	420
		Blackburn Elementary	Open	295	316
		Buckhorn Elementary	Open	195	208
		Carney Hill Elementary	Closed 2010	390	420
		Dome Creek Elementary	Closed 2001	25	25
		Giscome Elementary	Open	0	60
		Highglen Montessori Elementary	Open	270	289
		Hixon Elementary	Open	170	182
		Peden Hill Elementary	Open	245	265
		Pineview Elementary	Open	245	262
		Pinewood Elementary	Open	195	208
		Red Rock Elementary	Closed 2001	115	123
		South Fort George Elementary	Closed 2003	165	176
		Upper Fraser Elementary	Closed 2001		0
		Van Bien Elementary	Open	245	262
		Westwood Elementary	Open	315	338
	Secondary	Blackburn Jr Secondary	Closed 2002	325	347
		John McInnis Junior Secondary	Closed 2010	425	489
		Prince George Secondary School	Open	1,425	1,639
Valemont	Elementary	Dunster Fine Arts School	Closed 2010	50	53
		Valemount Elementary	Open	220	236
	Secondary	Valemount Secondary	Open	150	173



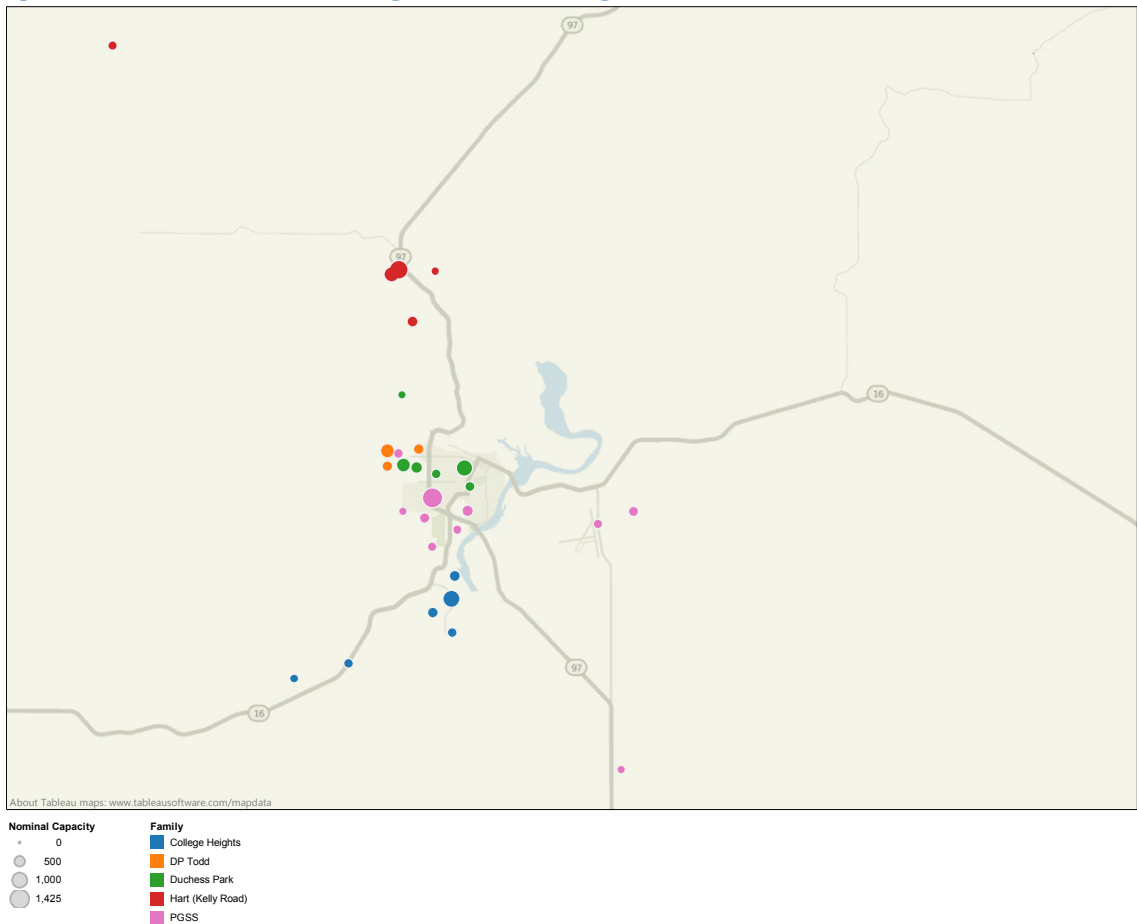
Note: nominal and working capacities have not been modified for Lac des Bois or Heather Park Elementary schools. While they were formerly a junior secondary and a middle school, they are now both elementary schools. The real capacity numbers would have decreased.

Maps

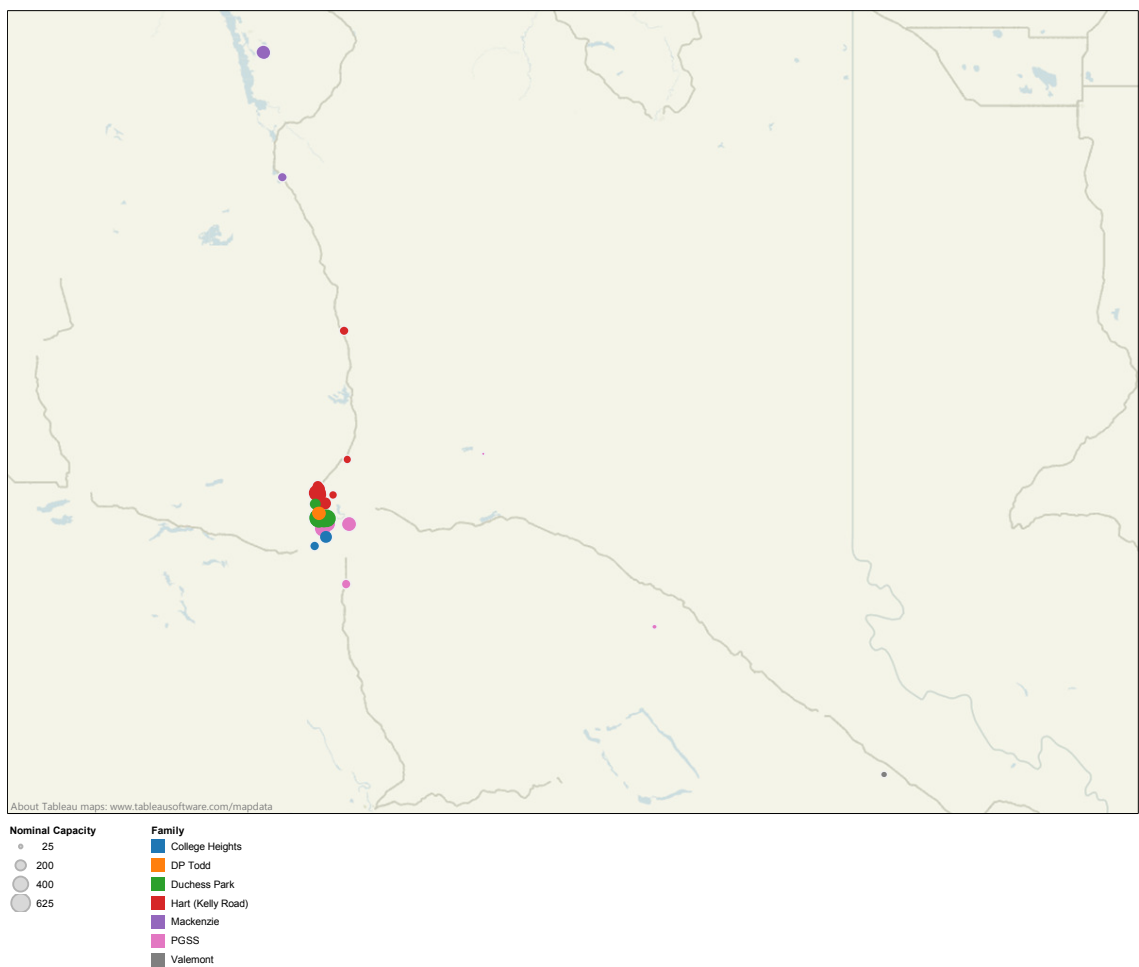
All Open Schools in the District



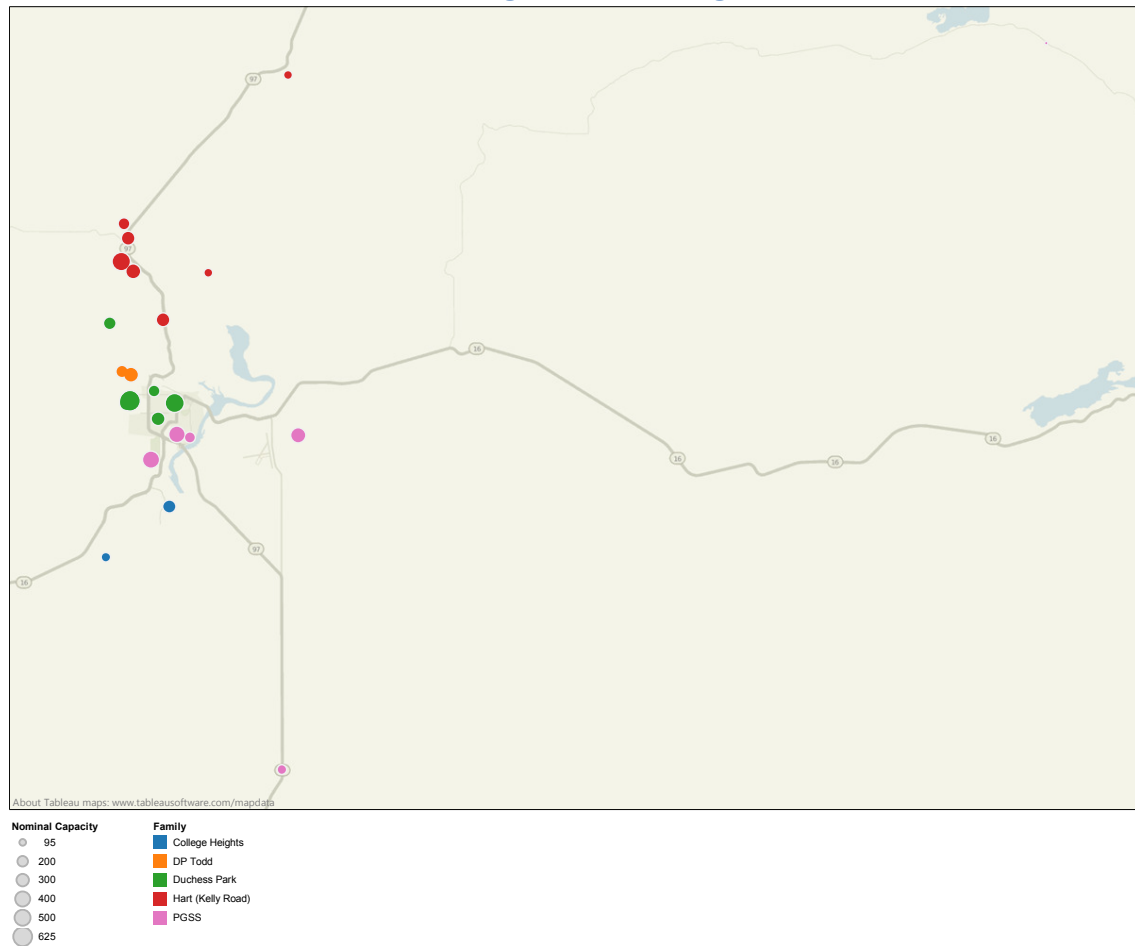
Open Schools in the Prince George area, excluding Hixon



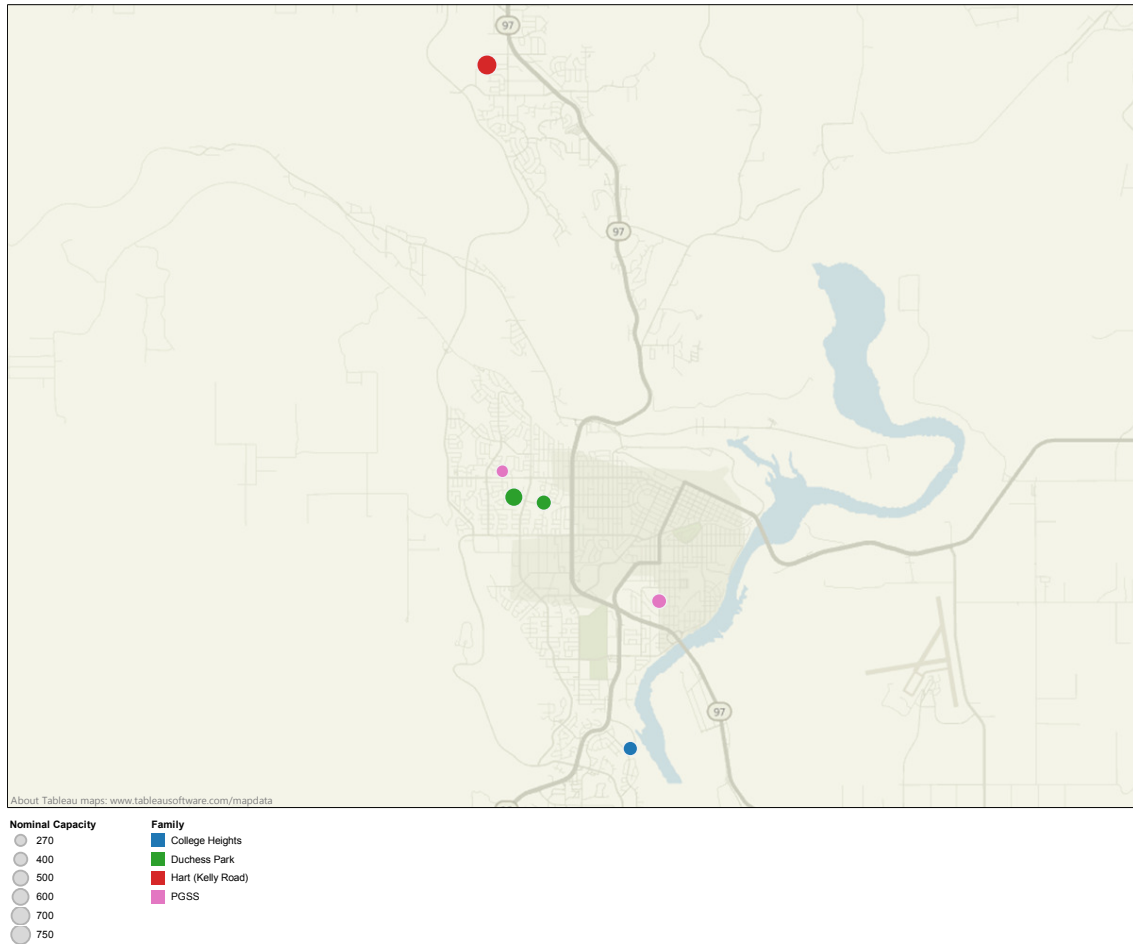
All Schools closed since 2001 in District



Schools closed since 2001 in Prince George area, excluding Bear Lake and Dome Creek



Open Choice Schools in the District



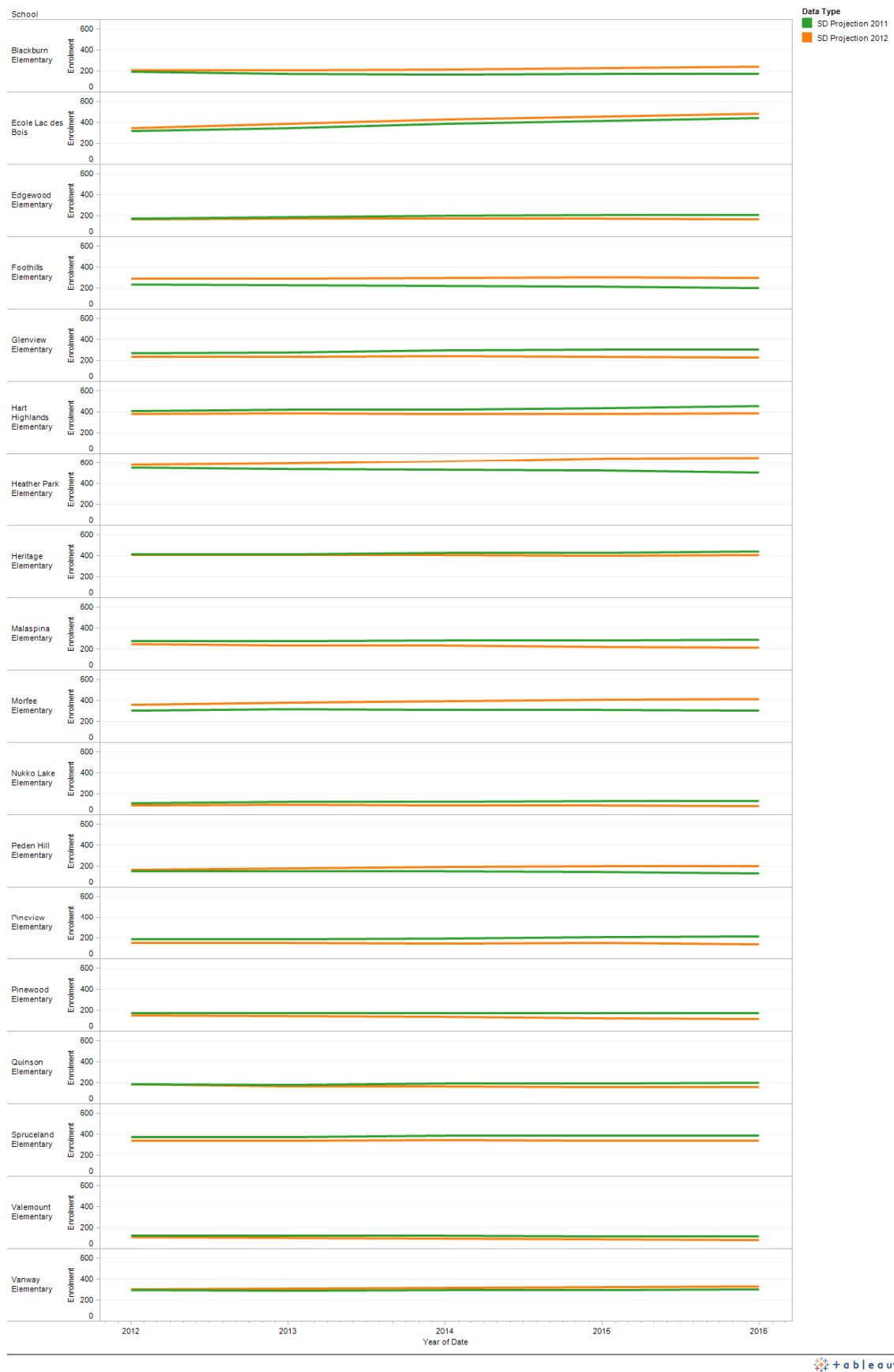
At this point, there are 3 choice schools (Traditional, Montessori, and single track French) grouped very closely together, one choice school (Aboriginal) on the other side of town, and two dual track French immersion programs, one in the Hart and one in College Heights.

Appendix E: Updated Projected Enrolments 2012 – School District

What is the difference between projections for the School District between 2011 and 2012?

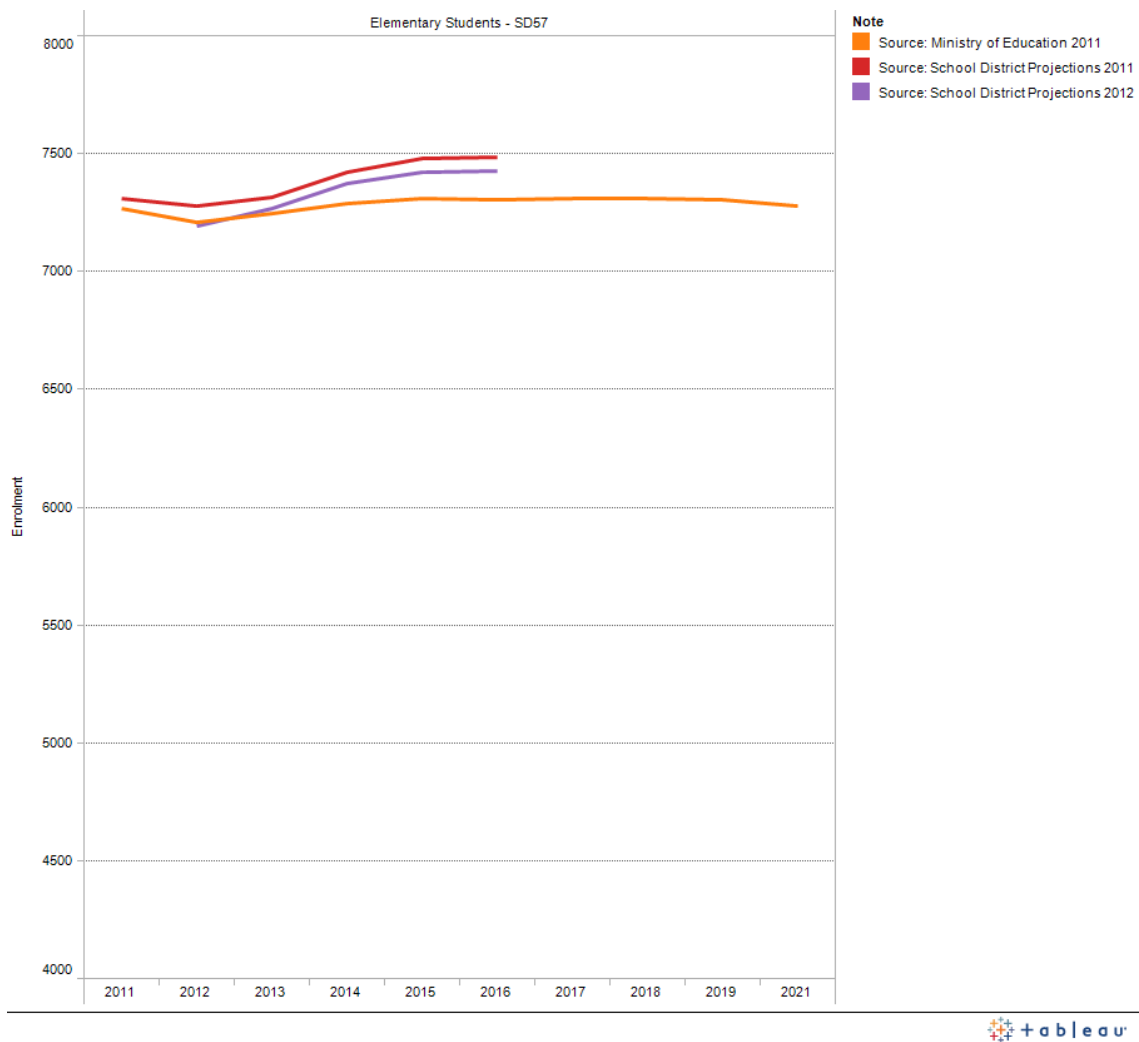
Family	Grade Type	School	2012		2013		2014		2015		2016	
			SD Projection 2011	SD Projection 2012	SD Projection 2011	SD Projection 2012	SD Projection 2011	SD Projection 2012	SD Projection 2011	SD Projection 2012	SD Projection 2011	SD Projection 2012
College Heights	Elementary	Beverly Elementary	215	212	212	208	206	205	203	202	194	192
		College Heights Elementary	410	396	394	383	382	377	364	369	350	355
		Malaspina Elementary	274	246	276	233	282	231	282	217	287	209
		Southridge Elementary Sch..	340	346	331	336	330	331	340	339	335	329
		Vanway Elementary	294	301	289	306	294	316	296	323	299	331
	Secondary	College Heights Secondary	921	963	921	953	898	926	847	884	828	844
	Total		2,454	2,464	2,423	2,419	2,392	2,386	2,332	2,334	2,293	2,260
DP Todd	Elementary	Foothills Elementary	232	286	225	289	217	295	211	298	195	297
		Heritage Elementary	414	407	411	402	424	407	425	401	437	407
		Quinson Elementary	183	181	177	166	188	166	188	168	196	157
	Secondary	D P Todd Secondary	723	749	686	708	626	656	605	618	578	582
	Total		1,552	1,623	1,499	1,565	1,455	1,524	1,429	1,475	1,406	1,443
Duchess Park	Elementary	Ecole Lac des Bois	312	342	345	384	387	425	413	453	438	481
		Edgewood Elementary	173	163	185	169	195	170	202	168	206	165
		Harwin Elementary	204	215	201	219	200	217	203	223	207	224
		Ron Brent Elementary	230	228	241	235	251	246	250	237	247	230
		Spruceland Elementary	368	335	373	339	383	340	388	338	386	333
	Secondary	Duchess Park Secondary	910	925	916	922	868	878	841	884	912	915
	Total		2,197	2,208	2,261	2,268	2,284	2,276	2,297	2,303	2,396	2,348
Hart (Kelly Road)	Elementary	Glenview Elementary	267	233	276	232	292	236	300	233	302	227
		Hart Highlands Elementary	403	378	417	385	419	377	432	376	451	384
		Heather Park Elementary	552	581	539	590	528	614	526	638	505	647
		Nukko Lake Elementary	109	90	122	97	121	88	125	87	128	81
	Secondary	Kelly Road Secondary	977	955	910	906	860	859	794	801	744	769
	Total		2,308	2,237	2,264	2,210	2,220	2,174	2,177	2,135	2,130	2,108
Mackenzie	Elementary	Morfee Elementary	304	357	313	381	305	390	309	405	302	413
	Secondary	Mackenzie Secondary	225	229	204	211	207	212	197	200	204	206
	Total		529	586	517	592	512	602	506	605	506	619
McBride	Elementary	McBride Centennial Eleme..	116	105	116	103	116	104	114	102	124	113
	Secondary	McBride Secondary	95	99	90	99	81	85	84	82	72	64
	Total		211	204	206	202	197	189	198	184	196	177
PGSS	Elementary	Aboriginal Choice School	183	160	186	175	192	192	194	202	198	216
		Blackburn Elementary	188	206	169	201	165	208	170	224	169	237
		Buckhorn Elementary	124	124	132	133	136	139	136	138	140	142
		Giscome Elementary	22	17	19	15	16	13	16	13	10	9
		Highglen Montessori Elem..	272	256	279	262	291	270	295	270	297	269
		Hixon Elementary	31	34	33	37	35	40	38	46	38	46
		Peden Hill Elementary	150	166	148	178	151	189	141	196	131	199
		Pineview Elementary	183	151	187	147	194	145	205	146	209	138
		Pinewood Elementary	168	149	172	143	173	136	171	122	169	114
		Van Bien Elementary	210	208	196	195	190	184	189	186	177	177
		Westwood Elementary	224	211	231	219	239	226	237	220	244	223
	Secondary	Prince George Secondary ..	1,319	1,305	1,236	1,205	1,138	1,111	1,103	1,061	1,104	1,052
	Total		3,074	2,987	2,988	2,910	2,920	2,853	2,895	2,824	2,886	2,822
Valemount	Elementary	Valemount Elementary	120	106	119	102	118	95	115	87	113	81
	Secondary	Valemount Secondary	82	87	82	84	83	84	81	80	88	83
	Total		202	193	201	186	201	179	196	167	201	164

There are noticeable increases for Blackburn, Lac de Bois, Foothills, Harwin, Heather Park, Morfee, Peden Hill, and Vanway. There are noticeable decreases shown for Edgewood, Glenview, Hart Highlands, Heritage, Malaspina, Nukko Lake, Pineview, Pinewood, Quinson, Spruceland, and Valemont Elementary.



What is the difference between the total projections for the Ministry of Education and the School District?

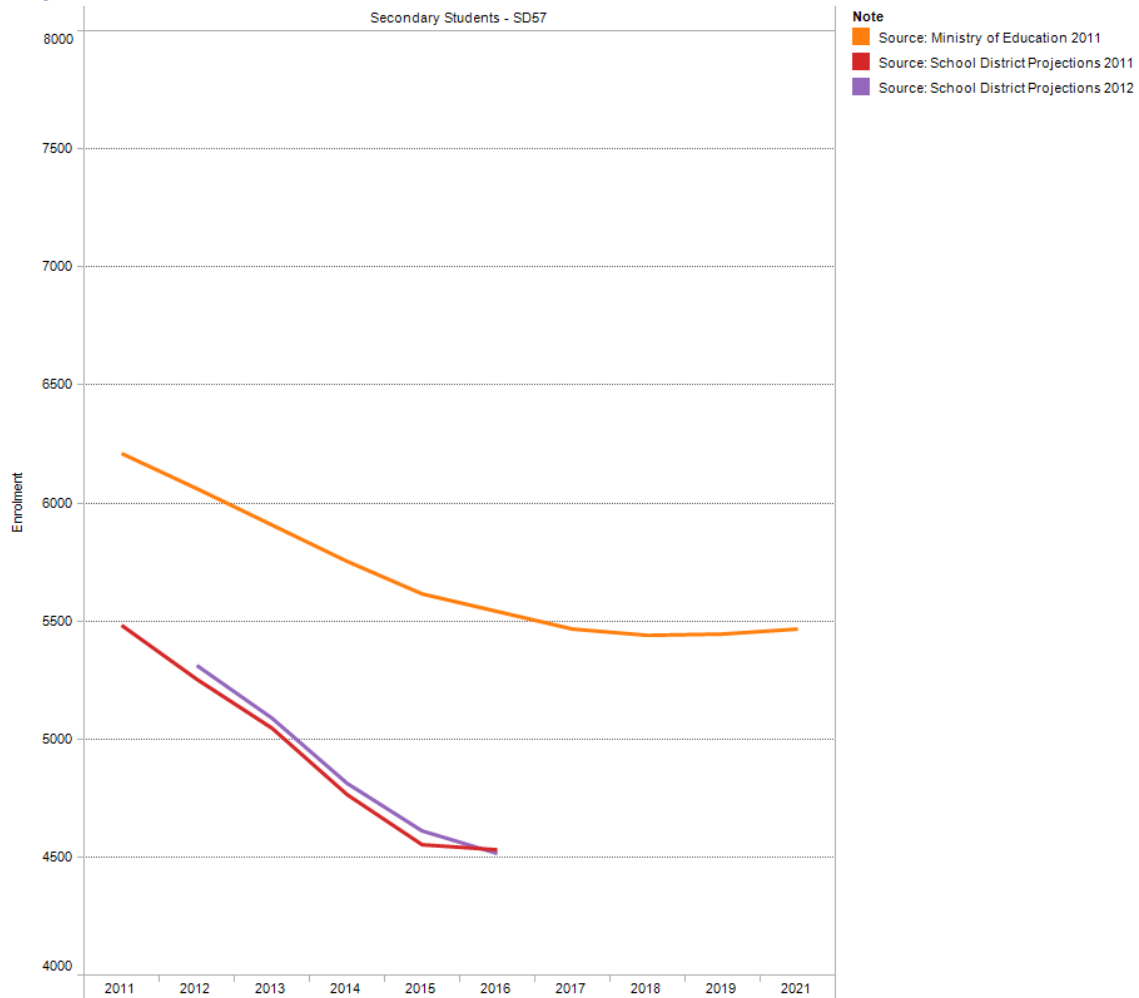
Elementary Enrolment –Ministry 2011 Projections, School District 2011 and 2012 Projections



There is not a large difference in the projections for elementary school students. The school district is showing an even higher increase in elementary school enrolment than the Ministry of Education is.

There has been a small drop in the school district projections between 2011 and 2012.

Secondary Enrolment –Ministry 2011 Projections, School District 2011 and 2012 Projections

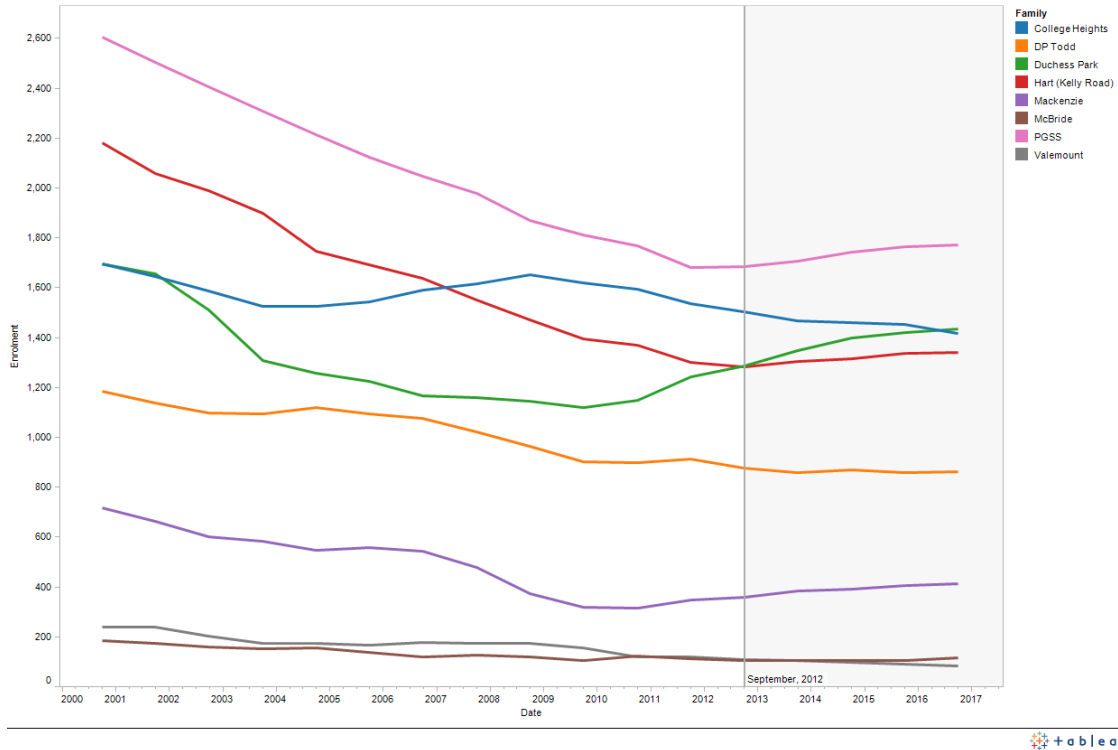


The school district projections available do not show the alternative programs, and are therefore not directly comparable. They have been included, as the school district projections seem to show a steeper decline in enrolment than do the Ministry projections.

There has been a small increase in the school district projections between 2011 and 2012.

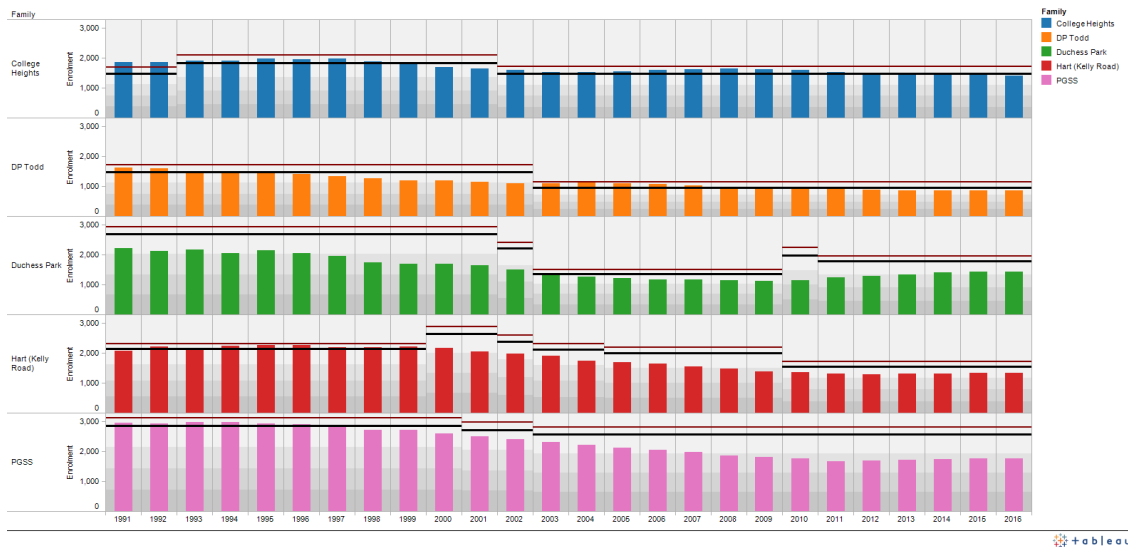
What are the school district enrolment projections for school family groups, as compared to capacity?

Elementary Enrolment – Actual and School District 2012 Projections



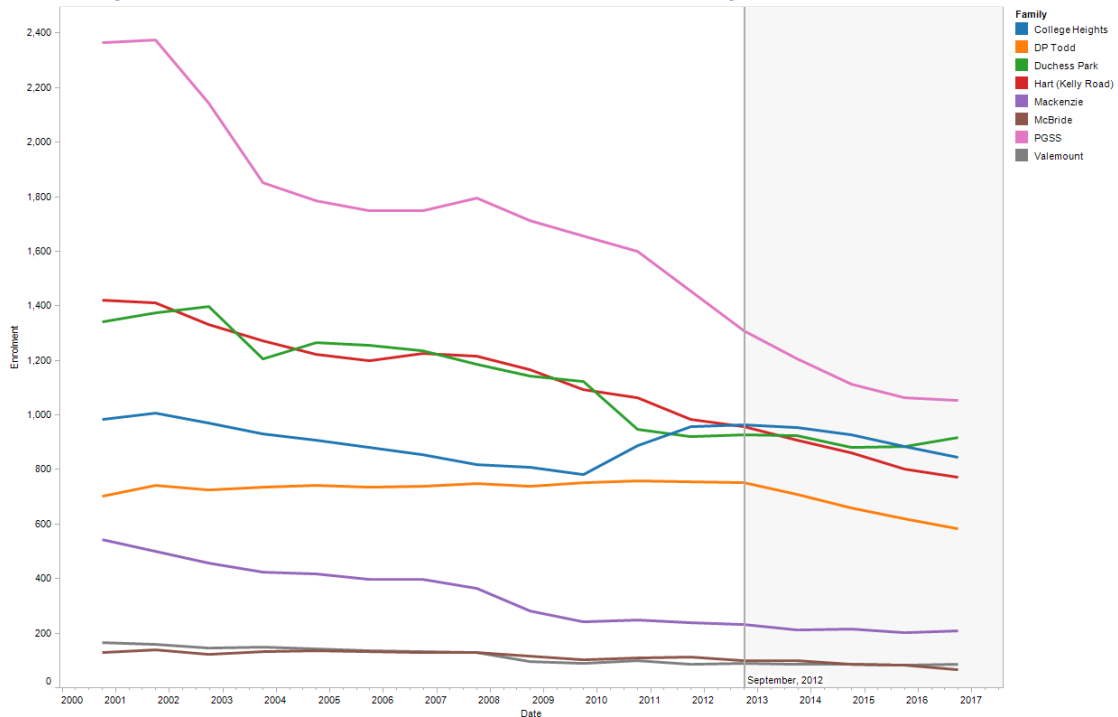
In these projections, the Duchess Park family group sees a large increase in students, while College Heights sees a decrease. All other family groups remain more or less constant.

Comparison of elementary enrolment and capacity



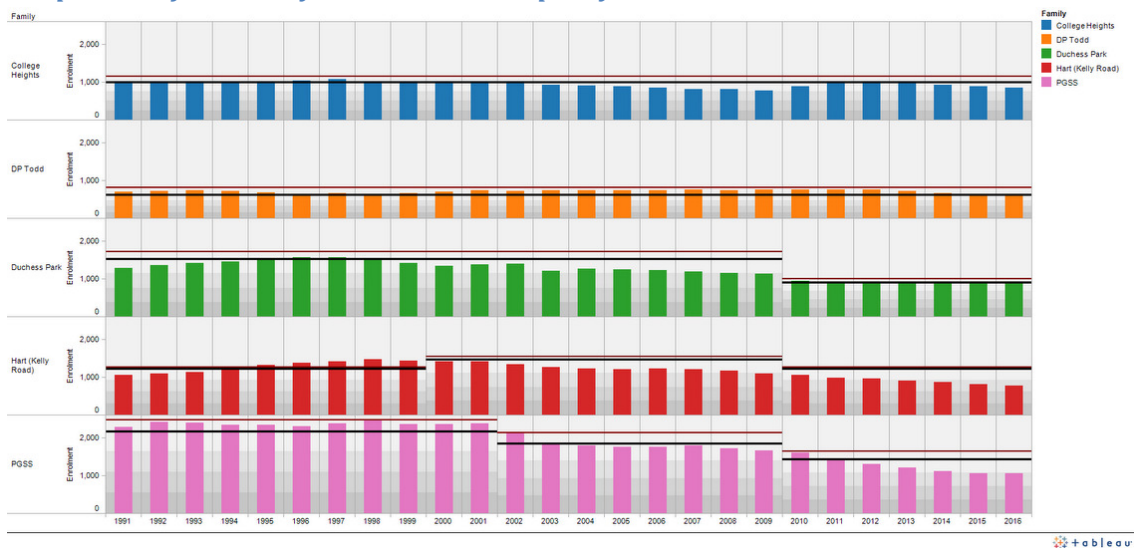
College Heights decreases to only filling schools to their nominal capacity, while Duchess Park increases from slightly over 50% of capacity to slightly over 75% of capacity.

Secondary Enrolment – Actual and School District 2012 Projections



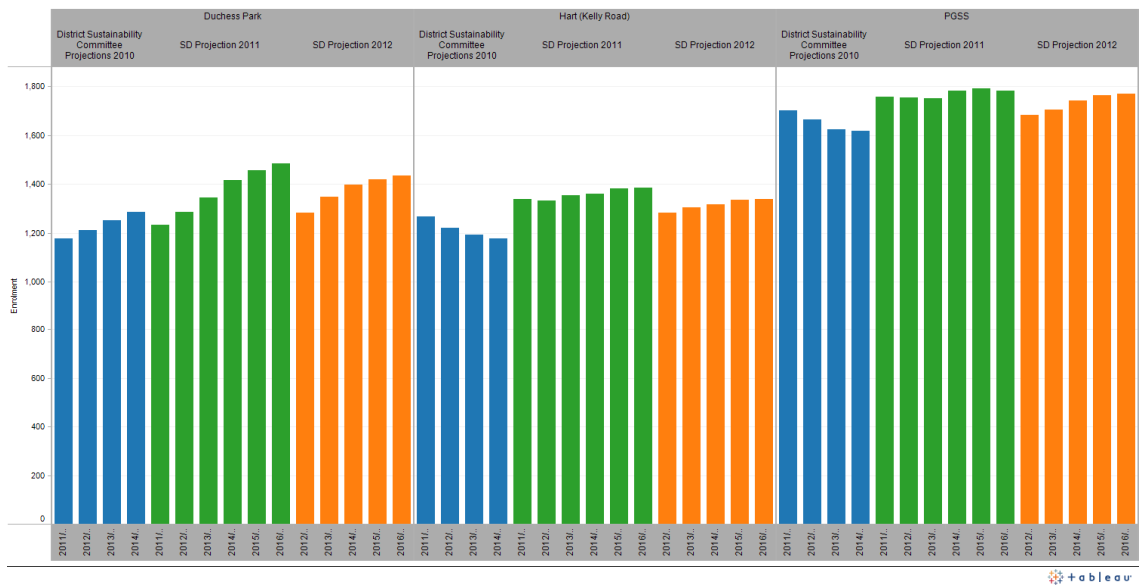
While Prince George secondary schools are at capacity currently, they are projected to fall in enrolment, especially for Kelly Road and PGSS.

Comparison of secondary enrolment and capacity

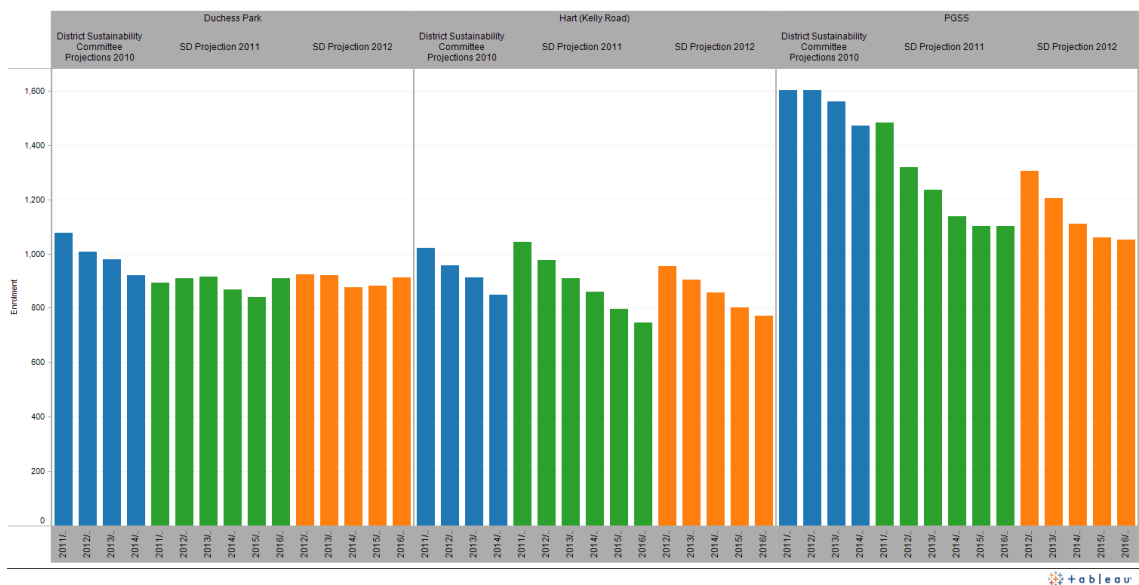


Are there differences in the projections shown in the District Sustainability report and the current district projections?

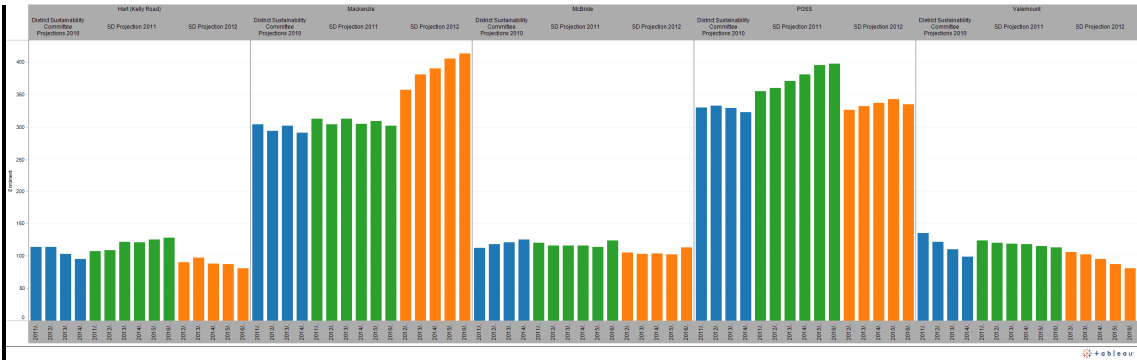
When looked at in family groups, there are three family groups that show more than a minor difference between the DSC projections and the 2011 or 2012 projections for elementary schools – Duchess Park, Kelly Road, and PGSS. All three groups show more students in the 2011 and 2012 school district projections than the 2010 projections.



Due to the closure of the junior secondary schools and the reallocation of students, the secondary school enrolment projections are not directly comparable.



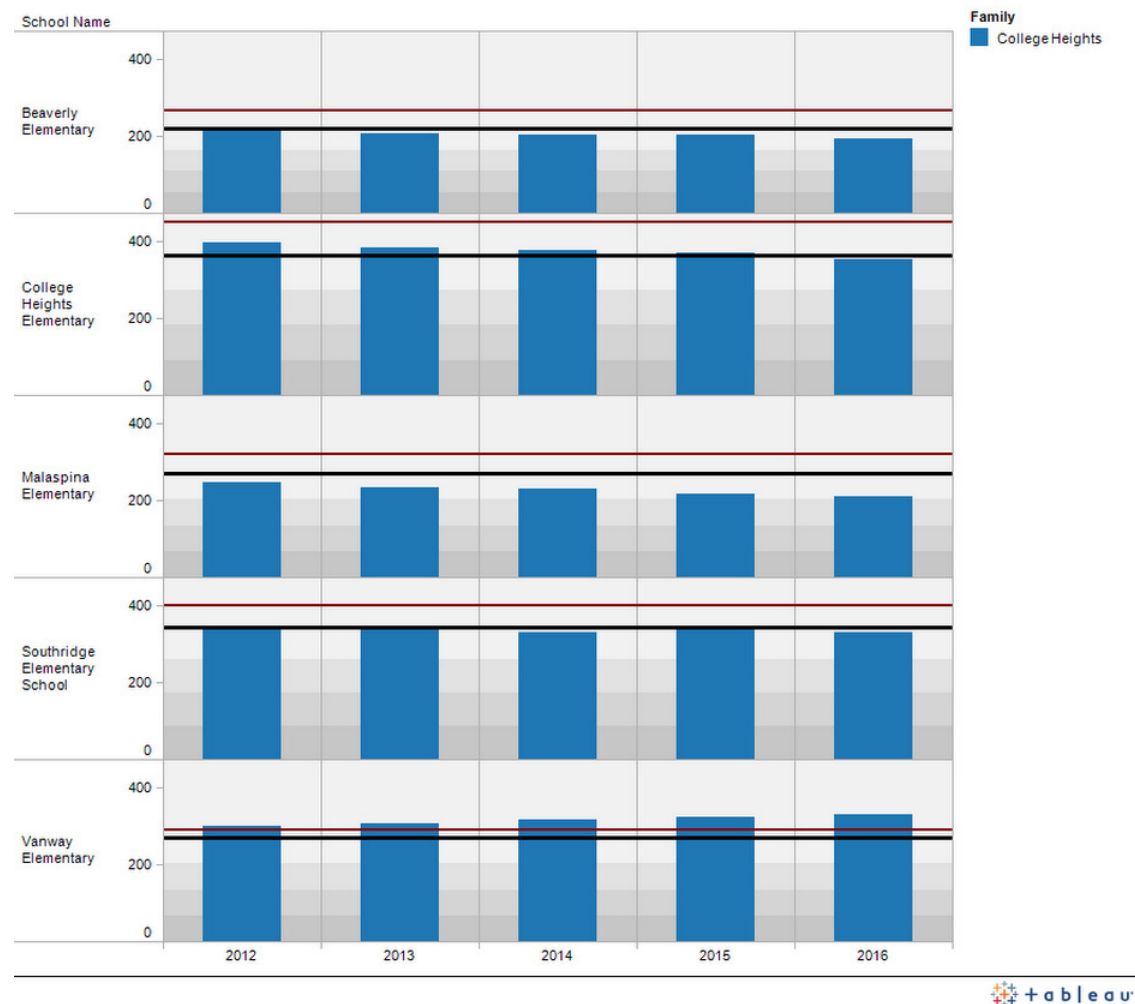
There are some differences for the schools receiving the small communities grant in each family.



These schools would include those in Mackenzie, McBride, and Valemount, as well as Nukko Lake, Salmon Valley, Shady Valley, Giscombe, Hixon, Buckhorn, and Pineview.

Individual School and Capacity Issues

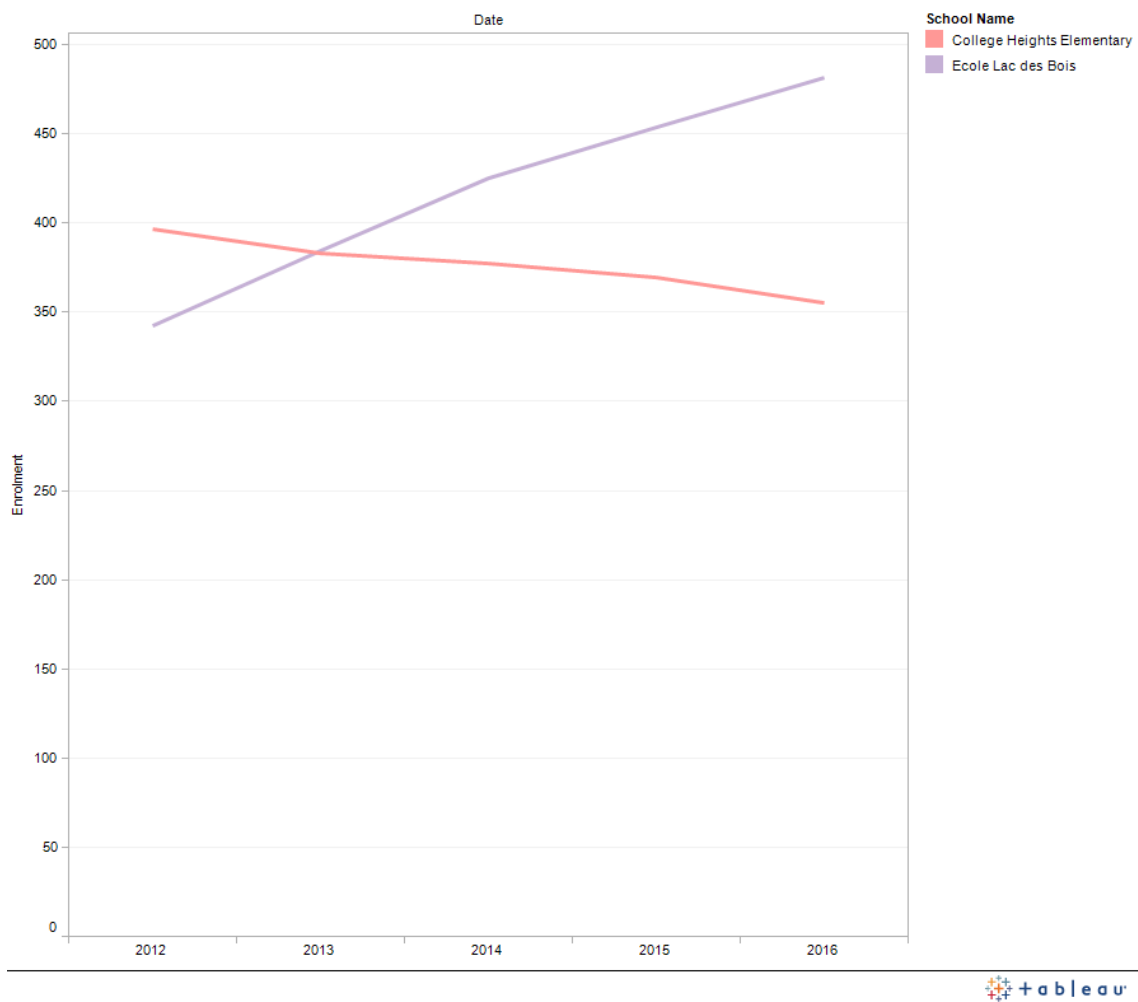
College Heights Elementary Schools



Elementary schools in the College Heights area are currently either at nominal or close to working capacity. Enrolment in this area has increased since 2003. The projections show a slight decrease from nominal capacity at Beverly, a decline for College Heights elementary to below nominal, an decrease at Malaspina (where there is a new modular/portable installed), Southridge staying at nominal capacity, and Vanway growing beyond capacity. If additional growth takes place in this part of the city, more capacity will be required for elementary schools in this area.

Note that College Heights Elementary had its registration capped for 2011 and 2012, as well as transfers in for French immersion in other grades. There is more demand for enrolment than there is space at this school. In 2012, both College Heights Elementary and Vanway Elementary have had kindergarten registration limited.

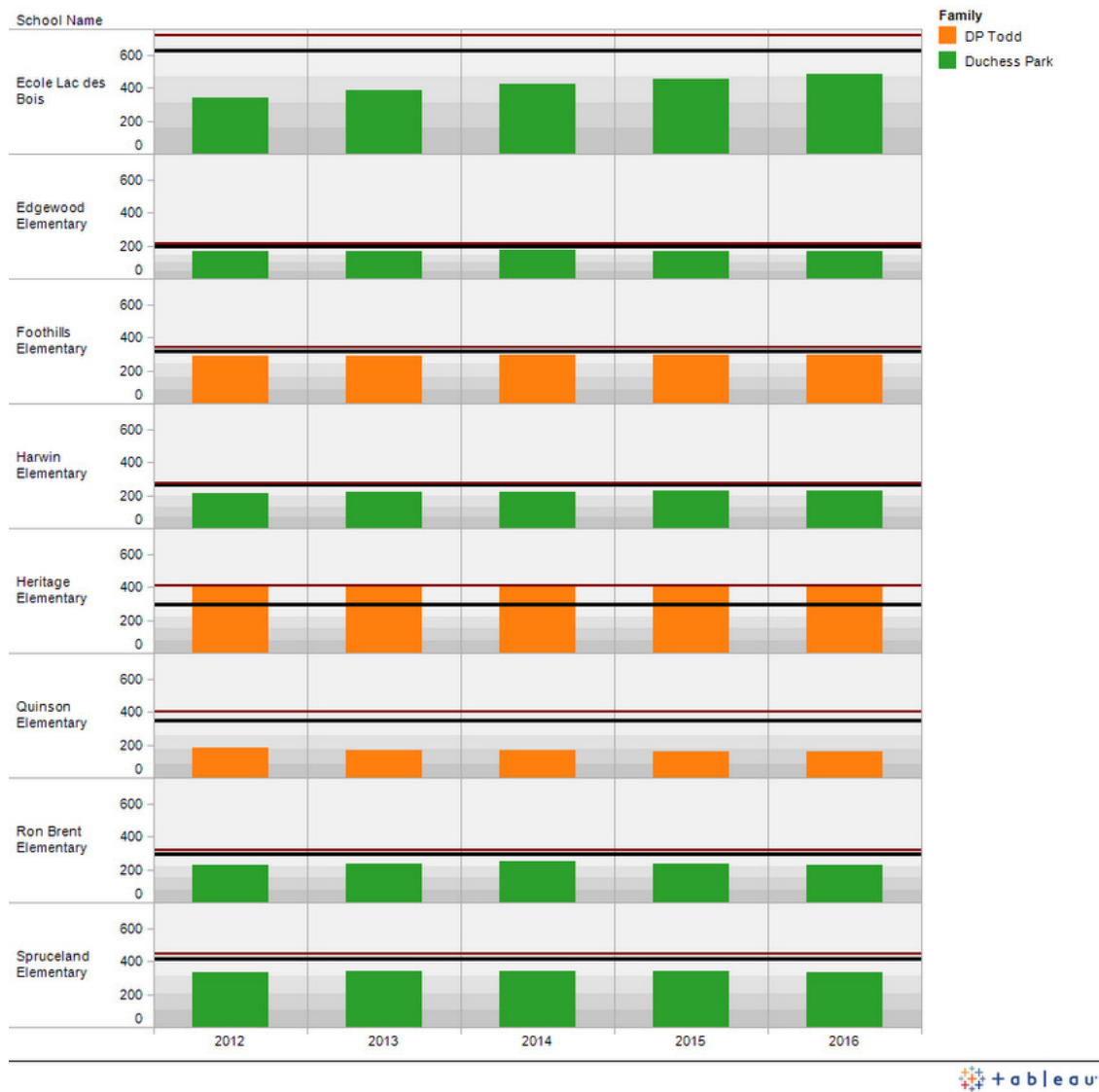
The French immersion students turned away from College Heights appear to be the primary source of the initial growth for École Lac des Bois:



Duchess Park and DP Todd

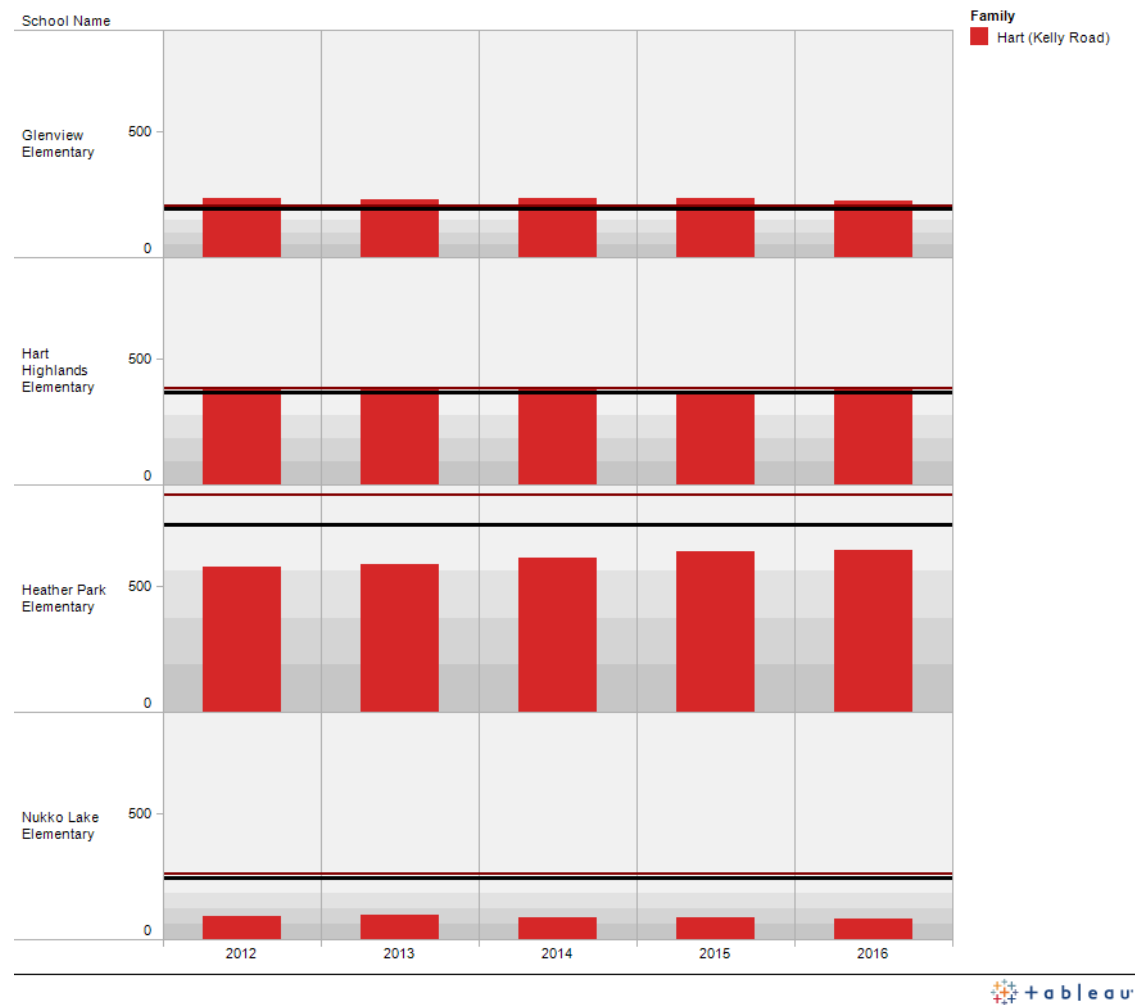
While it may seem as though there is a great deal of elementary capacity in the Duchess Park family, this is primarily due to extra space in the single track French immersion school.

Heritage Elementary is shown as being beyond nominal capacity, and in some years, beyond working capacity. Registration at Heritage has been capped in 2012.



Note: the nominal and working capacity for Lac des Bois has not been adjusted for use as an elementary school. The real capacity for this schools is lower than shown.

Kelly Road Elementary Schools



The projections for elementary schools in the Hart area appear to have been in error for 2011, and have been corrected in 2012.

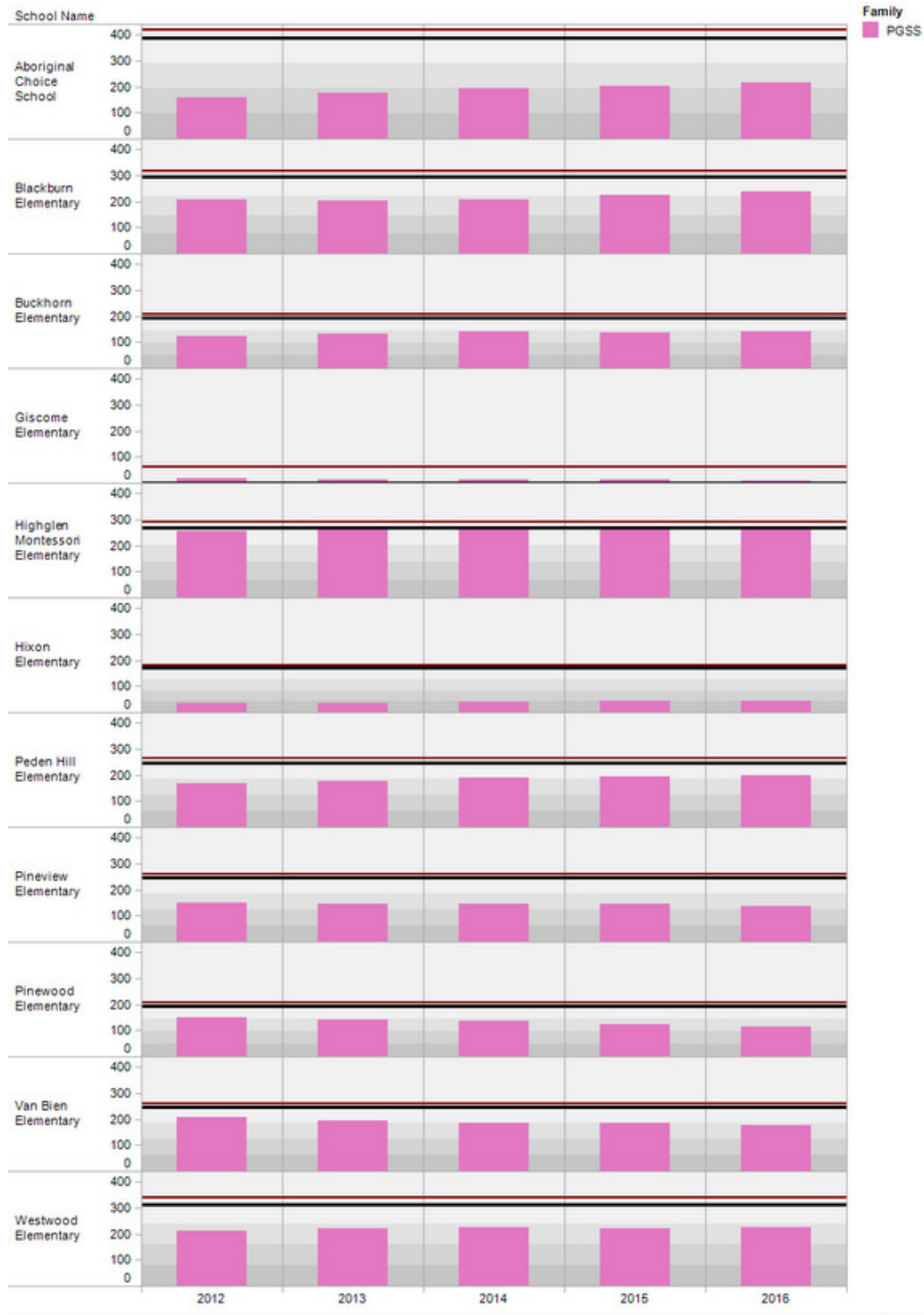
The 2012 projects show Glenview Elementary as slightly over capacity, and Hart Highlands is being shown just at working capacity. Heather Park Elementary is being shown with a some growth, while Nukko Lake is being shown with a small decline.

It is important to note that the capacity shown for Heather Park is based on it being a middle school, with a maximum class size of 30 students. Given the large numbers of kindergarten students currently registered at the school, the capacity of this school is much less than is shown in this report.

Both Hart Highlands and Glenview have had their registration capped in 2012.

As with College Heights, if additional growth takes place in this part of the city, more capacity will be required for elementary schools in this area.

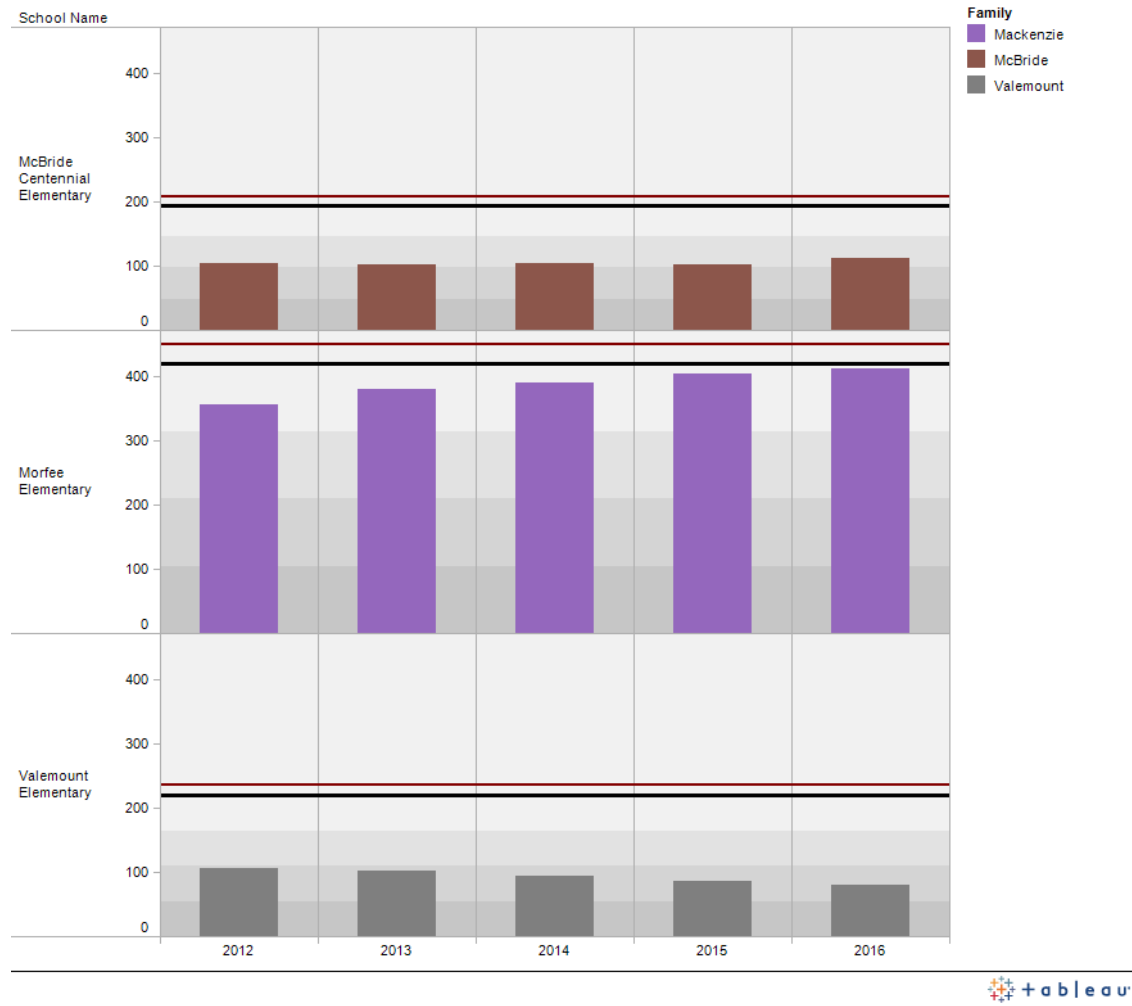
PGSS Elementary Schools



tableau

This family has a large number of schools at less than capacity, and one school with capacity issues.

Mackenzie, McBride, Valemount Schools



The 2012 projections show a growth in Mackenzie to the listed nominal capacity of the school.

Given the cyclical nature of the town and the lack of alternatives should the population suddenly increase, attention will need to be paid in the future to possible capacity issues.

District Choice Schools and Programs

